

## VideoXpert Core Media Gateway™ SVRP

### Product Features

- Provides scalability and modular expansion
- Ideal for systems with up to 800 cameras and 5 operators; maximum support for up to 2000 cameras per CMG depending on configuration
- Supports MJPEG, MPEG-4, H.264, and H.265
- Supports environments that use anti-virus and firewall software
- Supports ONVIF-compliant cameras and devices
- Supports DNS hostnames for ONVIF-compliant cameras and Pelco cameras
- Enables and supports Risk Management Framework (RMF) and FIPS 140-3



### VideoXpert Core™

VideoXpert Core™ is the heart of the VideoXpert System™, it maintains the database of cameras, recording devices, users, and permissions. Core works with VxToolbox, from which you can configure and manage the system. Through VxToolbox, you can administer user accounts and permissions, determining the system functions and devices users can access. You can create and assign “tags” to quickly organize cameras and devices within the system. You can also configure and respond to events within the system.

### VideoXpert Media Gateway™

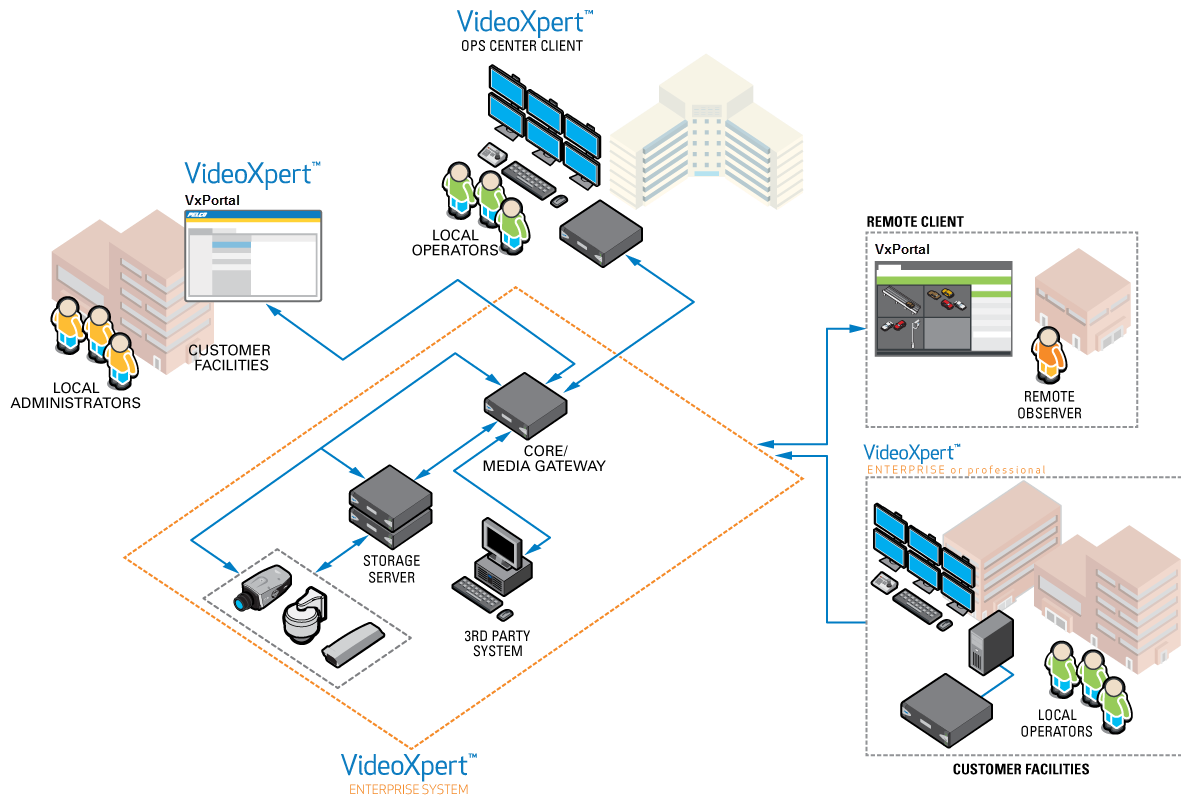
The VideoXpert Media Gateway™ routes video traffic to appropriate users as requested. The Media Gateway:

- Routes the video to the workstation in a multicast environment
- Accesses the video in a unicast environment
- Transcodes the video for low-bandwidth connected VxOpsCenter clients

Like Core servers, Media Gateways can be added to VideoXpert modularly. You can add Media Gateways to the system as the media delivery needs increase.

### System Topology When Using VideoXpert Aggregation™

VideoXpert Enterprise™ with Aggregation™ allows for expansion at any level of your security environment. Your system begins with a single server running Core and Media Gateway software. Your system can use dedicated VxOpsCenter Clients to view live and recorded video, or it can use VxPortal™, which fully utilizes HTML5 browser technology to deliver a similarly rich experience with no client software required. As your surveillance needs grow, you can add servers to expand modularly within a single environment, or you can aggregate multiple VideoXpert Enterprise systems to provide a single point of access for distributed video management networks.



## Technical Specifications

### Hardware

Item	Description
Processor	Intel® Xeon® E3-1275 v3
Memory	32 GB DDR3 ECC
Operating System	Microsoft® Windows® Server 2016
SSD Storage	480 GB
HDD Storage	1 TB
USB Ports	
USB 2.0	1x front, 2x rear
USB 3.0	2x rear

## Video

Item	Description
Video system	Intel HD Graphics P4700
Memory	Shared
Video Outputs	2x DisplayPort, DVI-D, VGA
Max Resolution	
DisplayPort	3840 x 2160 at 60 hz
DVI-D and VGA	1920 x 1200 at 60 hz

## Networking

Item	Description
Interface	Gigabit Ethernet (1000Base-T) ports (2x)

## Front Panel

Item	Description
Buttons	Power, configuration/reset
Indicators	
Unit Status	Green, amber, red
Primary Network	Green, amber, red
Secondary Network	Green, amber, red
Software Status	Green, amber, red (based on diagnostics)
Hard Disk Status	Green, red, off (behind bezel)

## Power

Item	Description
Power Input	100 to 240 VAC 50/60 Hz, autoranging
Power Supply	Internal
Power Consumption	
100 VAC	160 W, 1.60 A, 547 BTU/H

Item	Description
115 VAC	160 W, 1.39 A, 547 BTU/H
220 VAC	160 W, 0.72 A, 547 BTU/H

## Environmental

Item	Description
Operating Temperature	10° to 35°C (32° to 95°F) at unit air intake (front of unit)
Non-Operating Temperature	−40° to 65°C (−40° to 149°F)
Operating Relative Humidity	20% to 80%, noncondensing
Non-Operating Relative Humidity	10% per hour
Operating Altitude	−15 to 3,048 m (−50 to 10,000 ft)
Operating Vibration	0.25 G at 3 Hz to 200 Hz at a sweep rate of 0.5 octave/minute



**Note:** The temperature at the unit air intake can be significantly higher than room temperature. Temperature is affected by rack configuration, floor layout, air conditioning strategy, and other issues. To prevent performance failure and unit damage, make sure the temperature at the unit is continuously within the operating temperature range.

## Physical

Item	Description
Construction	Steel and plastic cabinet
Finish	
Finish—Front Panel	Dark gray with metallic silver end caps
Finish—Chassis	Dark gray
Dimensions (D x W x H)	50.8 x 43.4 x 8.9 cm (20 x 17.1 x 3.5 in)
Mounting (RU)	2 RU
Unit Weight	13.06 kg (28.8 lb)

## Certifications

Item	Description
CE	Class A
FCC, Part 15	Class A
ICES-003	Class A
UL/cUL Listed	✓
C-Tick	✓
CCC	✓
KC	✓

## Security

VideoXpert includes the following security features:

- Client authentication
- Passwords stored with cryptographic protection
- Configurable roles and permissions
- User action reports
- TLS-based encryption over HTTPS
- Support running with antivirus
- Ability to encrypt exports
- Synchronized system clocks using NTP
- Supports video and data encryption using AES-128-256 through third-party disk encryption software.
- Incorporates FIPS 140-3 validated cryptographic modules
- FISMA/NIST Configuration Guidance – This guide will help organizations documenting the system through their RMF process with information about:
  - How to categorize the system
  - Which NIST-based security controls are applicable
  - How VX implements NIST-based security controls
- FISMA/NIST Compliance Testing – VideoXpert is installed on a FISMA representative system with applicable DISA STIGs (Defense Information Systems Agency, Secure Technical Implementation Guidelines) and tested for functionality. Applicable STIGS include:
  - Microsoft Windows 10 for VxOpsCenter and VxToolbox
  - Microsoft .Net Framework 4
  - Microsoft Internet Explorer 11

- Microsoft Windows Firewall and Advanced Security
- Postgres Database 9.x
- Conforms to SB327 requirements (and international iterations of such) by enforcing default password changes upon initial configuration.

### Supplied Accessories

- Keyboard
- Mouse
- Rackmount kit
- Power cords (US, UK, and EU)

### Model Number

- **E1-CMG-SVRP** VideoXpert Core and Media Gateway all-in-one hardware; EU, US, and UK power cords included



Pelco, Inc.  
625 W. Alluvial Ave., Fresno, California 93711 United States  
(800) 289-9100 Tel  
(800) 289-9150 Fax  
+1 (559) 292-1981 International Tel  
+1 (559) 348-1120 International Fax  
[www.pelco.com](http://www.pelco.com)

**⚠ WARNING: Cancer and Reproductive Harm -**  
[www.P65Warnings.ca.gov](http://www.P65Warnings.ca.gov).  
**⚠ ADVERTENCIA: Cáncer y Daño Reproductivo -**  
[www.P65Warnings.ca.gov](http://www.P65Warnings.ca.gov).  
**⚠ AVERTISSEMENT: Cancer et Troubles de**  
**l'appareil reproducteur - [www.P65Warnings.ca.gov](http://www.P65Warnings.ca.gov).**

Pelco, the Pelco logo, and other trademarks associated with Pelco products referred to in this publication are trademarks of Pelco, Inc. or its affiliates. ONVIF and the ONVIF logo are trademarks of ONVIF Inc. All other product names and services are the property of their respective companies. Product specifications and availability are subject to change without notice.

© Copyright 2021, Pelco, Inc. All rights reserved.