



VideoXpert v 3.x
Magos Area Surveillance System (MASS)
Integration
Installation and Operations Manual



VideoXpert™

Document number: C6670M-A

Publication date: 06/20

Table of Contents

Introduction	3
System Overview	3
Installing the Plugins	3
Installing the MassPlugins	3
Installing MassMiddleware	4
Using MassPlugins	5
Using MASS Events	5
Using MASS Maps	7
Using MassMiddleware	8
Locating Logs	10
Pelco Troubleshooting Contact Information	10
Version Information	10
Integration Component Version	10
MASS Version	11

Introduction

This document is the installation and operation guide for VideoXpert Integration with Magos Area Surveillance System (MASS).

System Overview

The combination of MassPlugins and MassMiddleware software packages creates a seamless integration with Magos Area Surveillance System for the VideoXpert end-user.

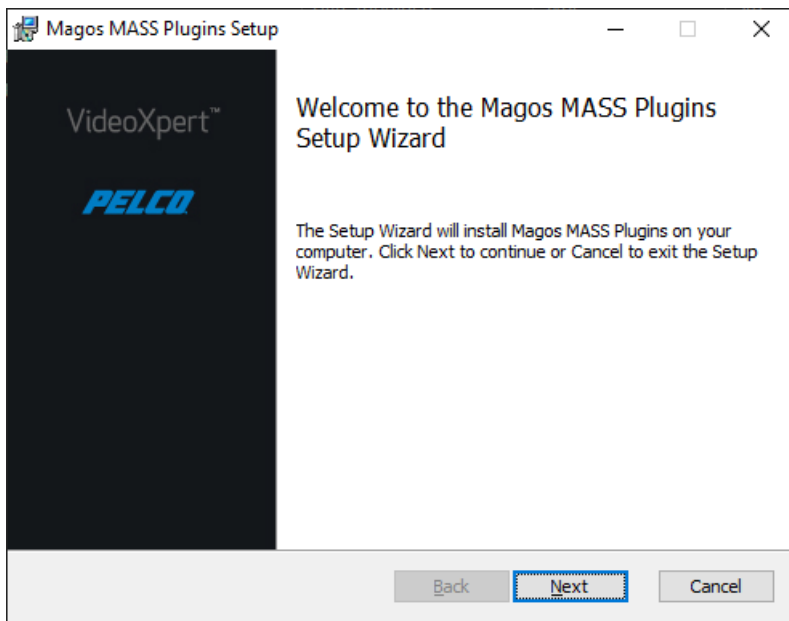
MASS Maps plugin provides rich mapping support embedded directly into VxOpsCenter allowing for full situational awareness.

MASS Events plugin displays the MASS events in a beautiful user interface directly in VxOpsCenter, allowing the user to respond to incoming alerts quickly and efficiently.

Installing the Plugins

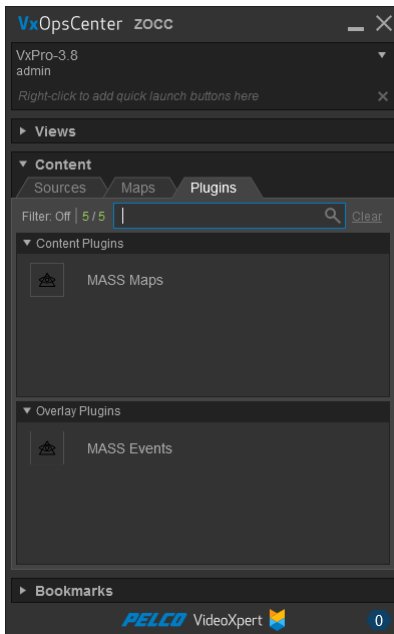
Installing the MassPlugins

1. Install the prerequisite, "Microsoft Visual C++ Redistributable for Visual Studio 2015 x64" .
2. Download and run the installer.
3. Click **Next** a few times to complete the installation process.



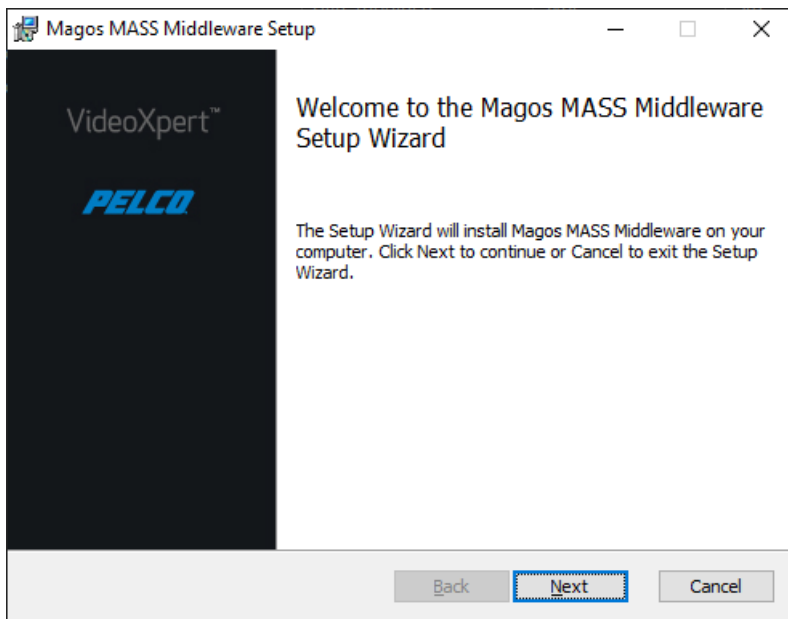
VideoXpert v 3.x Magos Area Surveillance System (MASS) Integration Installation and Operations Manual

4. Open VxOpsCenter. Two new plugins have been installed.



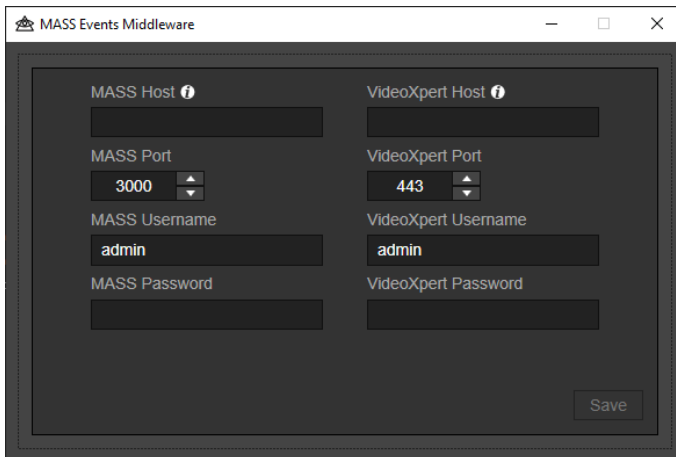
Installing MassMiddleware

1. Install the prerequisite, "Microsoft Visual C++ Redistributable for Visual Studio 2015 x64" .
2. Download and run the installer.
3. Click **Next** a few times to complete the installation.



VideoXpert v 3.x Magos Area Surveillance System (MASS) Integration Installation and Operations Manual

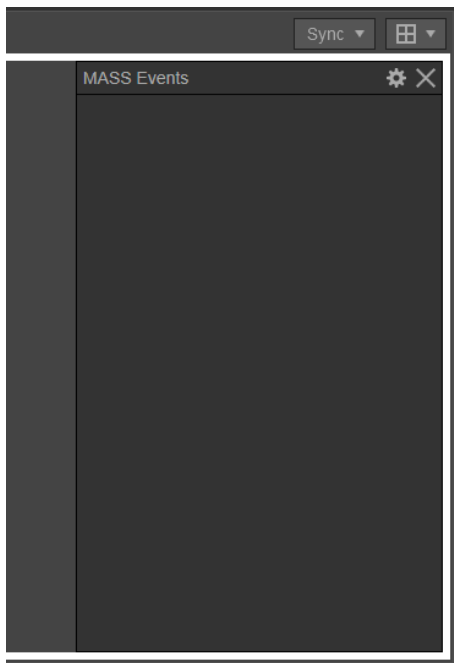
4. Run the MASS Events Middleware application to verify successful installation.



Using MassPlugins

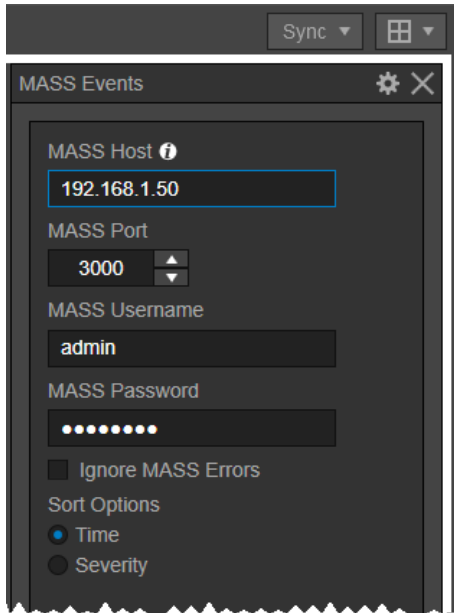
Using MASS Events

1. Drag the overlay plugin into an empty VxOpsCenter cell.
An error message appears because the plugin is not configured.

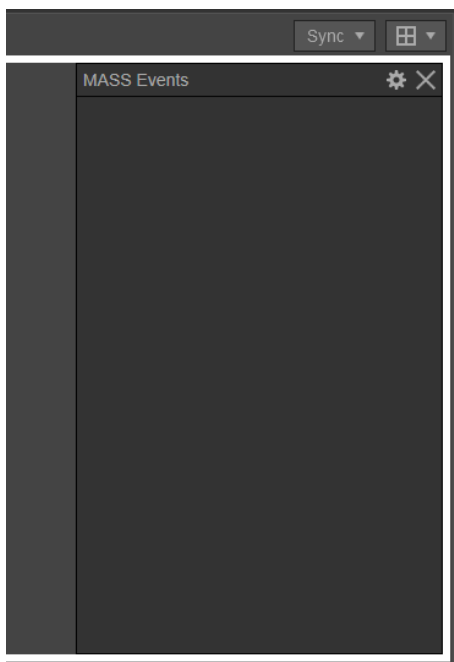


2. Select the *Settings* icon (⚙️) to configure the plugin.

VideoXpert v 3.x Magos Area Surveillance System (MASS) Integration Installation and Operations Manual

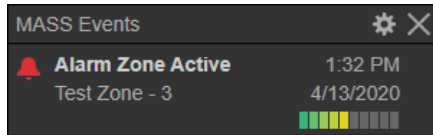


3. Enter the IP / host name of the MASS server.
4. Enter the port of the MASS server. The default is 3000.
5. To hide the *Unable to connect* error message, click the checkbox to select *Ignore MASS Errors*.
6. When the plugin is properly configured, the error message disappears.

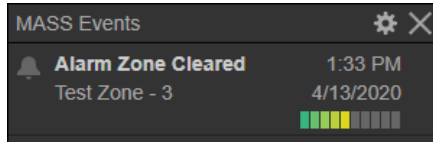


- An event will be received when a MASS alarm zone is active, for example when a person or vehicle enters the zone. At the far right of the user interface is a severity indicator which is the severity that is configured in MASS, and which is converted from a scale of 1-100 to a 1-10 value.

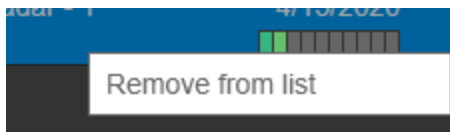
VideoXpert v 3.x Magos Area Surveillance System (MASS) Integration Installation and Operations Manual



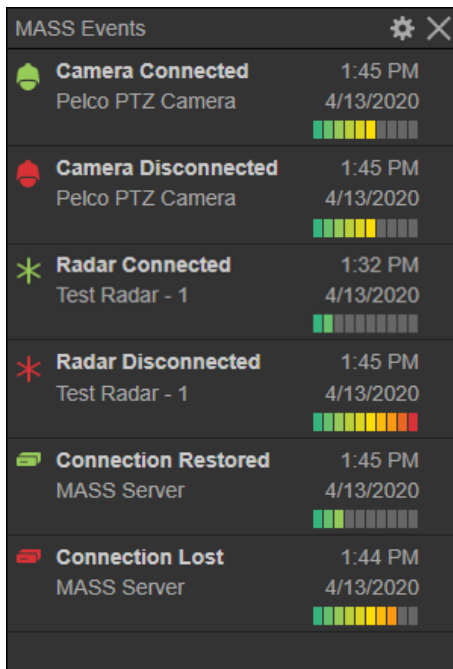
- A separate event will be received when an alarm zone is cleared.



7. To remove events from the list, right-click on an item, and then select **Remove from list**.



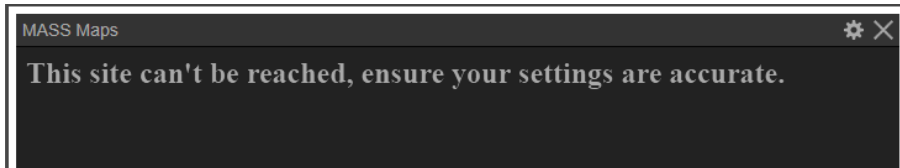
Status events will also be received when the connection state of a sensor or the MASS server changes. The severity level for these events is configured through the **Event Configuration** tab in VxToolbox.



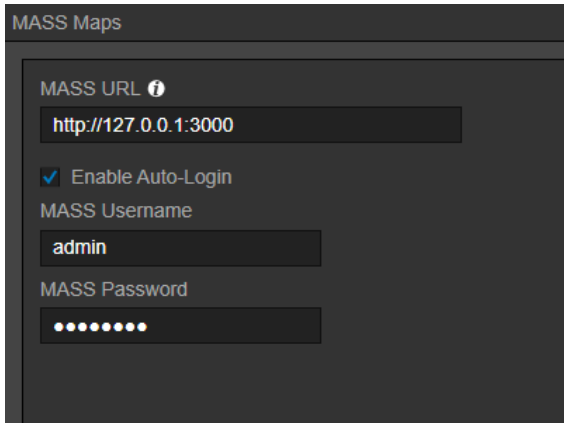
Using MASS Maps

1. Drag the overlay plugin into an empty VxOpsCenter cell.
An error message appears because the plugin is not configured.

VideoXpert v 3.x Magos Area Surveillance System (MASS) Integration Installation and Operations Manual

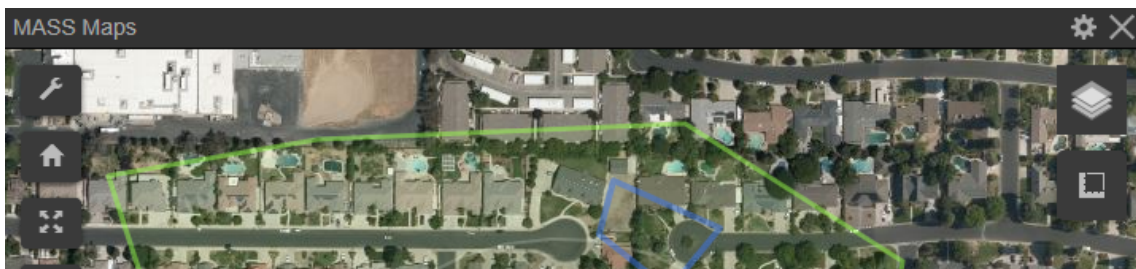


2. Select the **Settings** icon (⚙️) to configure the plugin.
3. Enter the MASS URL and port into the mapping web application.
In the example below, the URL is `http://127.0.0.1`, and the port is `:3000`.



4. To ensure that the plugin automatically logs in to the web application, click to select the checkbox for **Enable Auto-Login**, and then enter the credentials to use.
5. Save the settings.

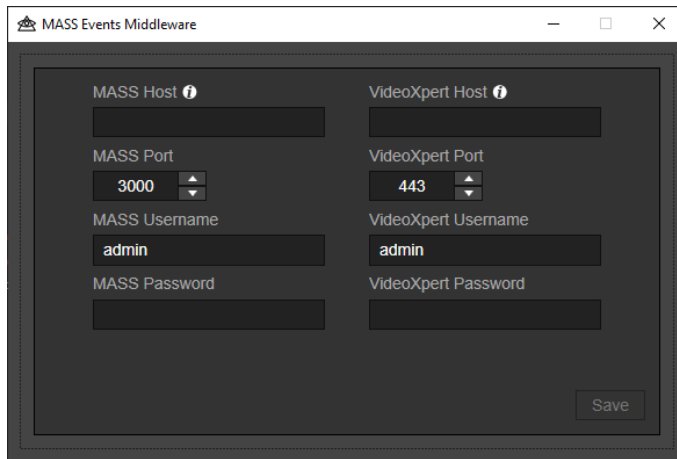
The plugin will automatically navigate to the web address entered, login as the user supplied, and open the MASS mapping application.



Using MassMiddleware

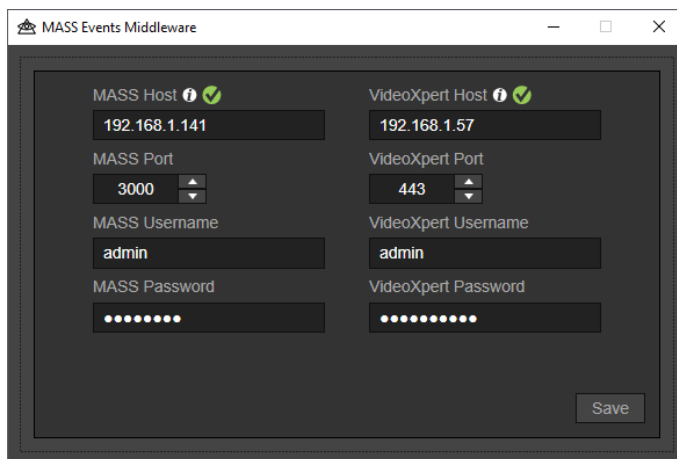
1. Run the MASS Events Middleware application.
2. Enter the IP or hostname of the MASS server on the left side of the user interface.
3. Enter the IP or hostname and relevant VideoXpert credentials on the right side of the user interface.

VideoXpert v 3.x Magos Area Surveillance System (MASS) Integration Installation and Operations Manual



The screenshot shows the 'MASS Events Middleware' configuration window. It has two columns of settings. The left column is for 'MASS' and the right for 'VideoXpert'. Each column has fields for Host, Port, Username, and Password. The 'MASS Host' field is empty. The 'MASS Port' is set to 3000. The 'MASS Username' is 'admin'. The 'MASS Password' field is empty. The 'VideoXpert Host' field is empty. The 'VideoXpert Port' is set to 443. The 'VideoXpert Username' is 'admin'. The 'VideoXpert Password' field is empty. A 'Save' button is at the bottom right.

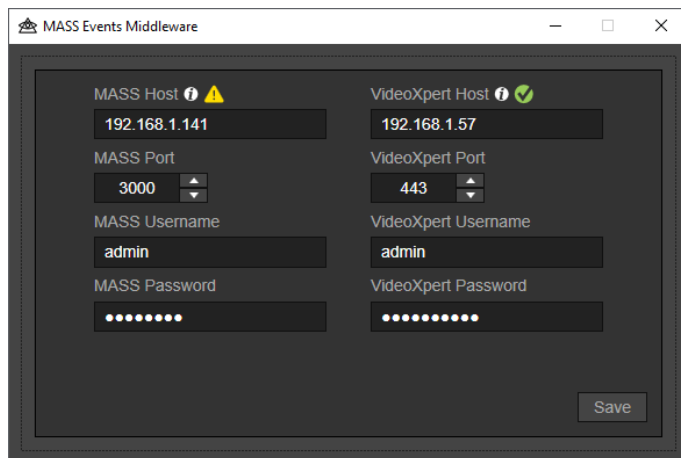
After all of the information is entered correctly the user will see green checkmarks next to the related sections.



The screenshot shows the 'MASS Events Middleware' configuration window after successful configuration. The 'MASS Host' field now contains '192.168.1.141' and has a green checkmark. The 'MASS Port' is 3000. The 'MASS Username' is 'admin'. The 'MASS Password' field is filled with dots. The 'VideoXpert Host' field now contains '192.168.1.57' and has a green checkmark. The 'VideoXpert Port' is 443. The 'VideoXpert Username' is 'admin'. The 'VideoXpert Password' field is filled with dots. A 'Save' button is at the bottom right.

4. Click **Save**.
5. Close this application to minimize it to the system tray and run it in the background.
6. To open and/or reconfigure the middleware, double-click the icon in the system tray.
7. To exit and close the middleware, right-click the icon in the system tray, and then click **Exit**.
8. If the MASS server or VideoXpert server is disconnected, the middleware application will display an exclamation mark warning icon.

VideoXpert v 3.x Magos Area Surveillance System (MASS) Integration Installation and Operations Manual



Locating Logs

Logs are located at “C:\ProgramData\Pelco\Logs\MagosMASS”.

To enable verbose logging:

- Edit “C:\ProgramData\Pelco\OpsCenter\Plugins\Pelco\Magos\Events\NLog.config”.
- Edit “C:\ProgramData\Pelco\OpsCenter\Plugins\Pelco\Magos\Maps\NLog.config”.
- Edit “C:\Program Files\Pelco\Integrations\Magos\MASS\NLog.config”.
- Ensure that “Debug” is set for the “minlevel” attribute for all “logger” elements.
- Restart the applications for the settings to take effect.

VxSdk logs are located at “C:\ProgramData\Pelco\VxSdk\Logs”.

Pelco Troubleshooting Contact Information

For further assistance, contact Pelco Product Support at 1-800-289-9100 (USA and Canada) or +1-559-292-1981 (international).

Version Information

Integration Component Version

Component Name	Version	Description
MassPlugins	1.0.5 (Software) / 3.8 (VX)	Two VxOpsCenter plugins are packaged with this installer. The first is MASS Maps, which presents the user with a map of their configured site. The second plugin is MASS Events, which lists all events sent from the MASS system.
MassMiddleware	1.0.5 (Software) / 3.8 (VX)	Middleware is used to listen for MASS events and inject them into VideoXpert as events.

MASS Version

Component Name	Version	Description
MASS3	v3.20.3.2	Magos Radar server software

VideoXpert v 3.x Magos Area Surveillance System (MASS) Integration Installation and Operations Manual



Pelco, Inc.
625 W. Alluvial, Fresno, California 93711 United States
(800) 289-9100 Tel
(800) 289-9150 Fax
+1 (559) 292-1981 International Tel
+1 (559) 348-1120 International Fax
www.pelco.com

Pelco, the Pelco logo, and other trademarks associated with Pelco products referred to in this publication are trademarks of Pelco, Inc. or its affiliates. ONVIF and the ONVIF logo are trademarks of ONVIF Inc. All other product names and services are the property of their respective companies. Product specifications and availability are subject to change without notice.

© Copyright 2020, Pelco, Inc. All rights reserved.