

# Evolution 180 Indoor Camera

## QUICK START GUIDE

EVO-180-WJD

EVO-180-WID



### Important

- Read these instructions carefully before installing or operating this camera.
- This camera should be installed by a qualified service person and the installation should conform to local and national regulations.
- This camera is not suitable for installation in a ceiling void that is used as an air handling space.
- Certified as FCC Class A. In a domestic environment this camera may cause radio interference in which case the user should take adequate measures.



**DANGER: RISK OF EXPLOSION IF REPLACING A BATTERY WITH AN INCORRECT BATTERY TYPE.**

### Default Password

User Name: **admin**

Password: **admin**

### Welcome

The Oncam Evolution 180 Indoor camera is designed to be connected to an IP network. Configure and operate the camera using a standard internet browser.

Installation and configuration procedures are described for standard surface and pendant mount applications.

<b>Power Input</b>	Power over Ethernet (PoE), IEEE standard 802.3af or 12 VDC, 1.0 A (min) LPS, NEC Class 2 power supply
<b>Operating Temperature (°C / °F)</b>	0 to + 40°C (-32 to +104°F)
<b>Enclosure</b>	Aluminum and Polymer
<b>Weight</b>	0.55 kg (1.21 lbs)

### Supplied Parts

- EVO-180 Camera
- 0° Mounting Box
- 25° Mounting Box
- 45° Mounting Box
- 3/4" NPT to M20 adapter
- M20 Conduit Port Plug
- Quick Start Guide
- Drilling Templates
- Screwdriver and Security Bit
- I/O Connector
- Camera Mounting Screws
- M20 Conduit Locking Nut

### Technical Support

For the A&E, Specification, Installation and User Manual, Software and Firmware visit:

[www.pelco.com](http://www.pelco.com)

**Tel:** +1 559-292-1981 (International)

**Email:** [techsupport@pelco.com](mailto:techsupport@pelco.com)

### MAC Address

Make a note of the camera's MAC address and installation location. Find the MAC address printed on the camera label. This information may be needed during the camera configuration.



### Installation & Mounting

The Evolution 180 Indoor camera is designed for installation on flat surfaces. The camera is supplied with three different mounting boxes angled at 0°, 25° and 45°. These mounting boxes can be used to aim the camera at the most important area of the scene.

*Note: You will require 4 appropriate fixing screws*

### Camera Module Preparation

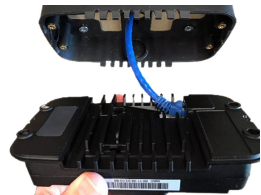
1. Undo the two side screws, while holding the camera cover in place.
2. Remove the cover exposing the camera module.
3. Take care not to touch the lens glass.

### Surface Installation

1. Remove the mounting box back cover. Slide the back cover upward away from the bracket body.
2. Fit the M20 Conduit plug, if the port is unused.
3. Using the drilling template, drill mounting holes.
4. Fix the mounting box onto the installation surface using appropriate screws for the surface type. Route the network cable through one of the M20 conduit holes or at the rear of the mounting bracket.
5. Continue to **"Completing Installation"**.

### Pendant Installation

There are M20 threaded holes in all of the camera mounting boxes, to allow them to mount directly onto the bottom of a threaded conduit, or onto a compatible camera pendant arm. A 3/4" NPT adapter is supplied for 3/4" conduits.



1. Screw the Mounting Box onto the threaded conduit (using the 3/4" NPT adapter if required).
2. Pass a network cable through the conduit into the mounting box, and terminate the cable.

### Completing Installation

1. Connect the network cable to the camera.
2. There are anchor points on the back of the camera to secure the network cable if required.
3. Fit the camera to the mounting box, ensuring the arrow on the face of the camera is pointing up, and secure with the four screws provided.
4. Refit the camera cover using the two side screws.
5. Peel off the lens cover.

## Startup

### Powering the Camera

Supply power to the camera with PoE IEEE802.3af through the integrated RJ45 Ethernet port or using the 12V DC input pins on the I/O connector. Both camera LEDs will be green when the camera is booted with an ethernet connection.

### IP Settings

In order to use the camera you will need its IP address.

There are two IP modes:

- DHCP
- Static IP

Default static IP is: **192.168.0.200**

Should a DHCP server not be available, the camera adopts the default static IP address above. The Camera Configuration Tool can be used to assign each camera with a new unique static IP address.

**Note:** See the camera's User Manual and Camera Configuration Tool User Manual for IP Setting adjustments.

## Using a Browser to access cameras

Internet Explorer 11 is required to view live camera images in the browser. For all other browsers, Oncam's 360-degree Viewer can be used to view live images from any Oncam camera on the network.

### Accessing the camera using any browser

1. Enter the camera's IP address into the browser's address bar.
2. Enter the camera's User Name and Password.

## Using the 360 Degree Viewer

Download version 3.17 or above of the 360-degree Camera Viewer from the Oncam website (<https://www.oncamgrandeye.com/security-systems/360-camera-viewer/>).

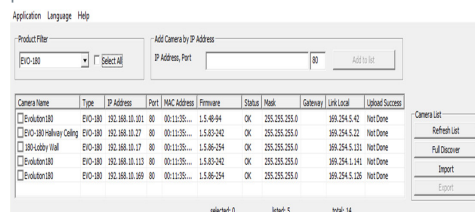
Install the 360-degree Viewer and start it. Open the camera list by clicking on the top button on the left and double-click the camera in the list to view it. A screen similar to the one on the right should appear.

## Using the Camera Configuration Tool

The Camera Configuration tool quickly finds the IP and MAC addresses of all Oncam cameras connected to the network. It also allows you to change network settings, configure multiple cameras and perform software updates.

Go to the Oncam website (<https://www.oncamgrandeye.com/security-systems/camera-configuration-tool>) to download the latest version of the Camera Configuration tool and its User Manual.

Start the application, and the software will scan the network and provide a list of all connected Oncam cameras, as shown below.



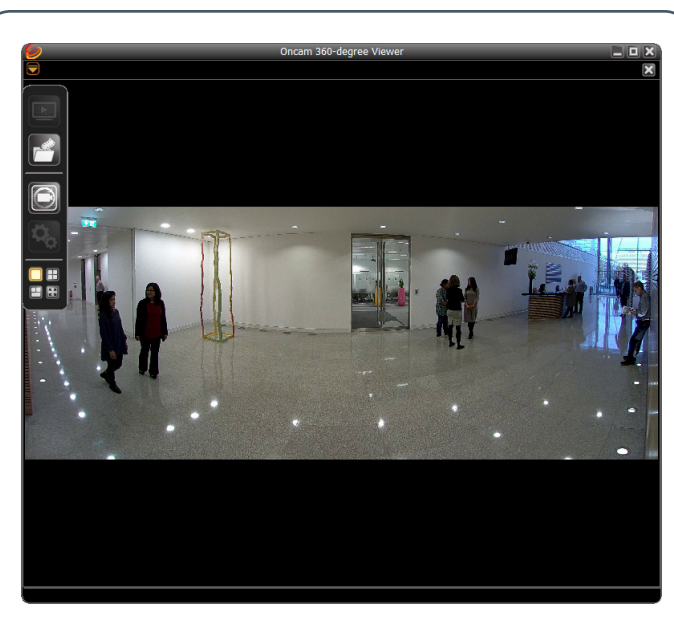
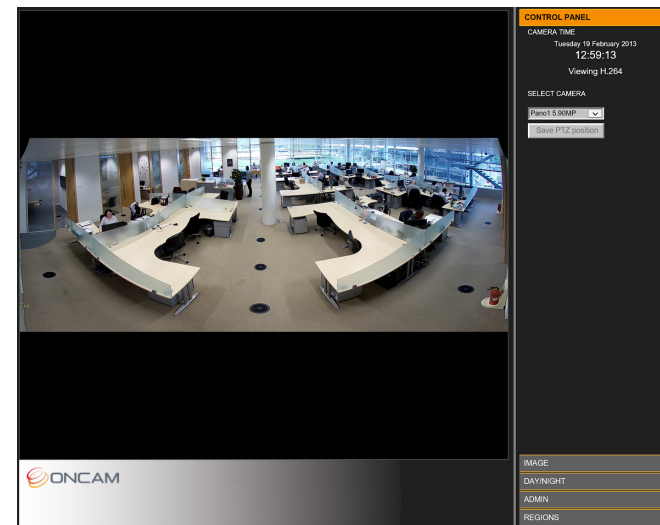
Go to the Pelco website ([www.pelco.com/vxtoolbox](http://www.pelco.com/vxtoolbox)) to download the latest VX Toolbox used to discover and configure Pelco cameras (in absence of a VMS).



### Viewing Video in Internet Explorer 11

1. Download and install VLC (<https://www.videolan.org/vlc>)
2. Tick one or more cameras in the camera list.
3. In the Browser section, click "View in IE".
4. Enter the camera's User Name and Password.

A screen similar to the one on the right should appear.



## Next Steps

The camera's web GUI has sophisticated adjustments in the IMAGE tab, for different mounting angles and scenes.

If the camera itself is tilted, set the wall mount angle corresponding to the tilt e.g. -25°, -45° to make vertical lines in the scene parallel.

Scene offset angle allows the panoramic view to be tilted up or down to precisely capture the desired scene.

For demo and installation videos visit:  
[www.oncamgrandeye.com/180\\_degree\\_cameras](http://www.oncamgrandeye.com/180_degree_cameras)

Download our **FREE ONVU360** mobile application and put the **EVO-180°** real time monitoring experience right at your fingertips.

**onvU360**



Scan the QR Code to get it now.