



VideoXpert Dispatch Plugin

Contents

- Overview3
- Installation3
 - Prerequisites3
 - Procedure3
- VideoXpert Dispatch Plugin Configuration3
- VideoXpert Dispatch Plugin Operation6
- Supported Alarm Devices.....8
- Supported ASCII Devices.....8
- Frequently Asked Questions8
- Pelco Troubleshooting Contact Information8

Overview

The VideoXpert Dispatch Plugin allows users to activate relays on Adam and Moxa external IO devices. It also allows users to send ASCII commands over Ethernet.

Installation

PREREQUISITES

Prior to installation, the following should be installed:

- VideoXpert Ops Center

PROCEDURE

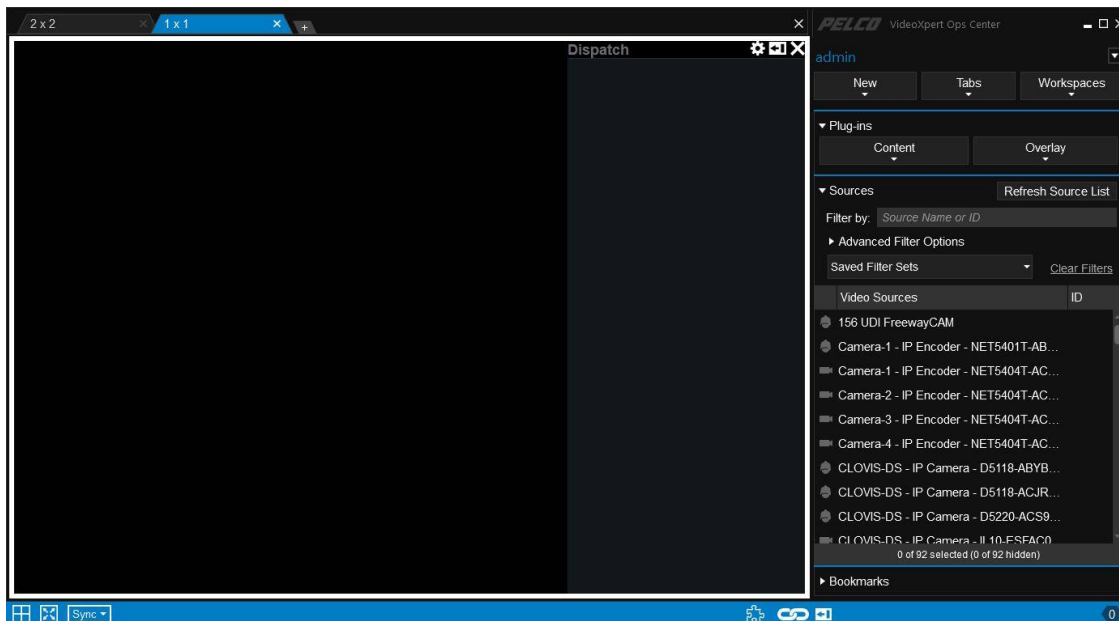
Note: see **Installation > Prerequisites** for a list of requirements prior to installation. If any of the prerequisites are missing, the service will be unable to run and the installation will fail.


To install the VideoXpert Dispatch Plugin, run the provided `setup.msi` file and follow the on-screen prompts.

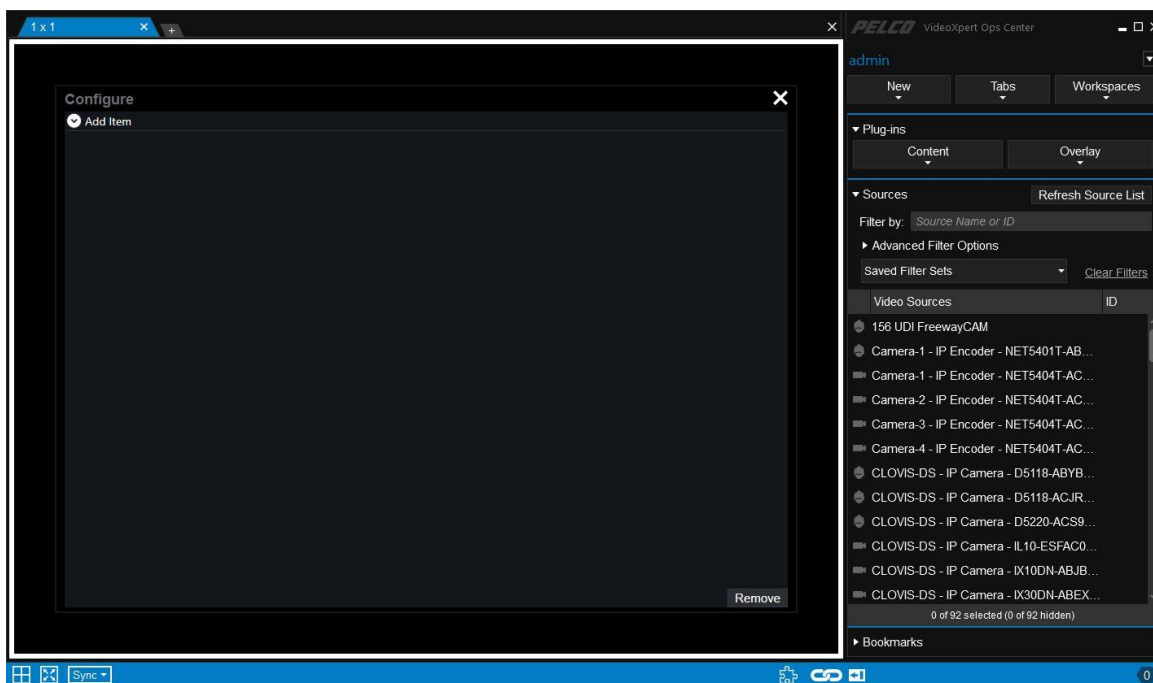
The plugin will install into the plugin directories for Ops Center and be available via the Plugins -> Overlay selection.

VideoXpert Dispatch Plugin Configuration

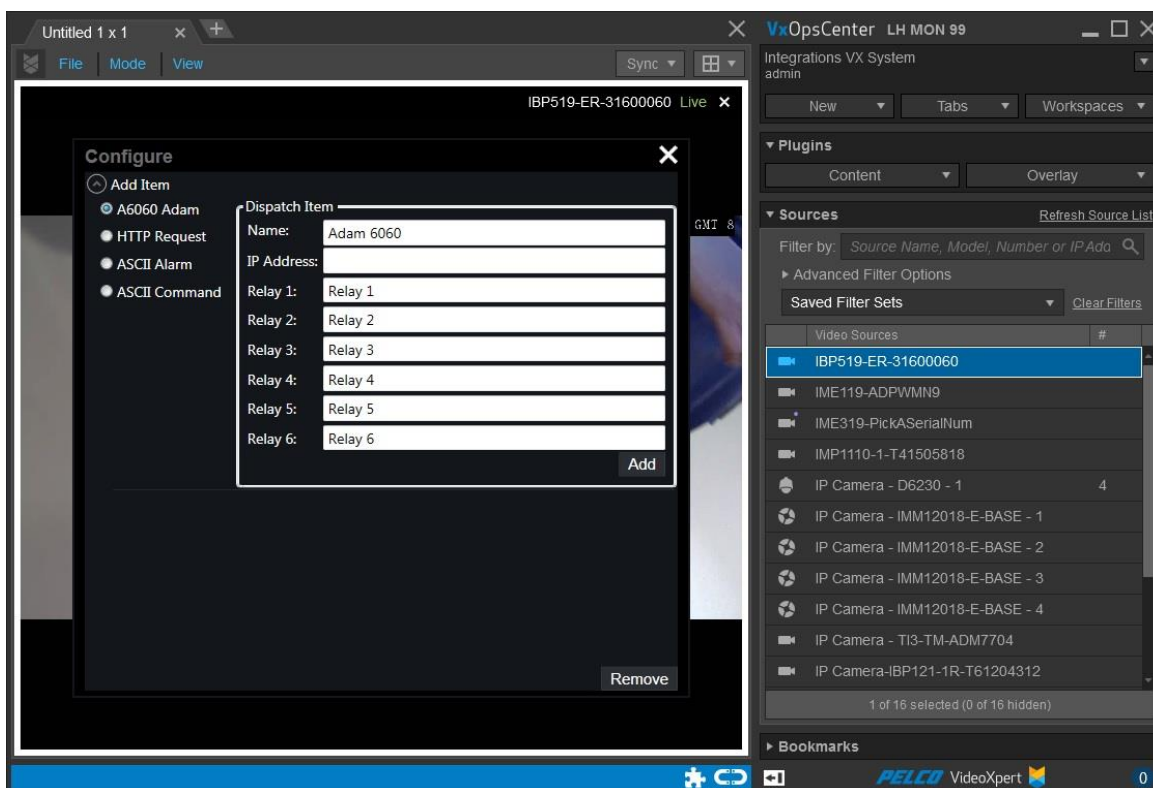
The VideoXpert Dispatch Plugin requires configuration to connect to the External I/O devices. The configuration of the plugin is done by loading the plugin in Ops Center.



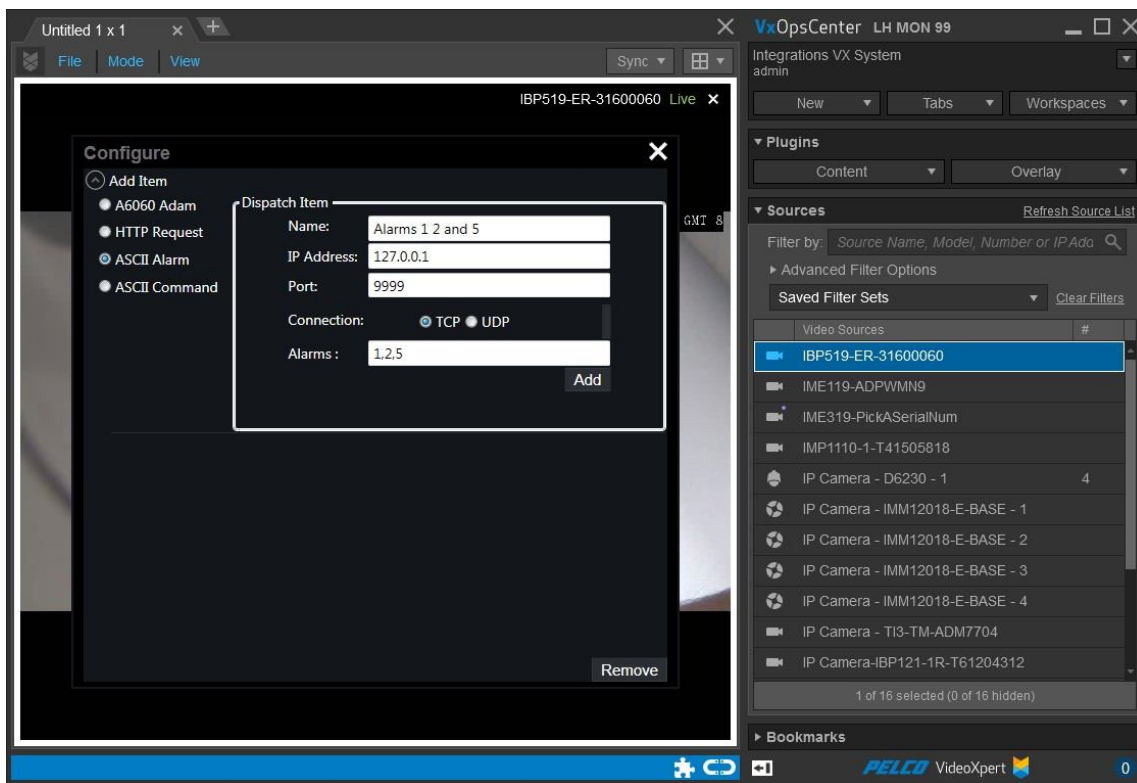
Once loaded click on the gear icon . The configuration page will load and ask to “Add Item”. Click on the Add Item button.



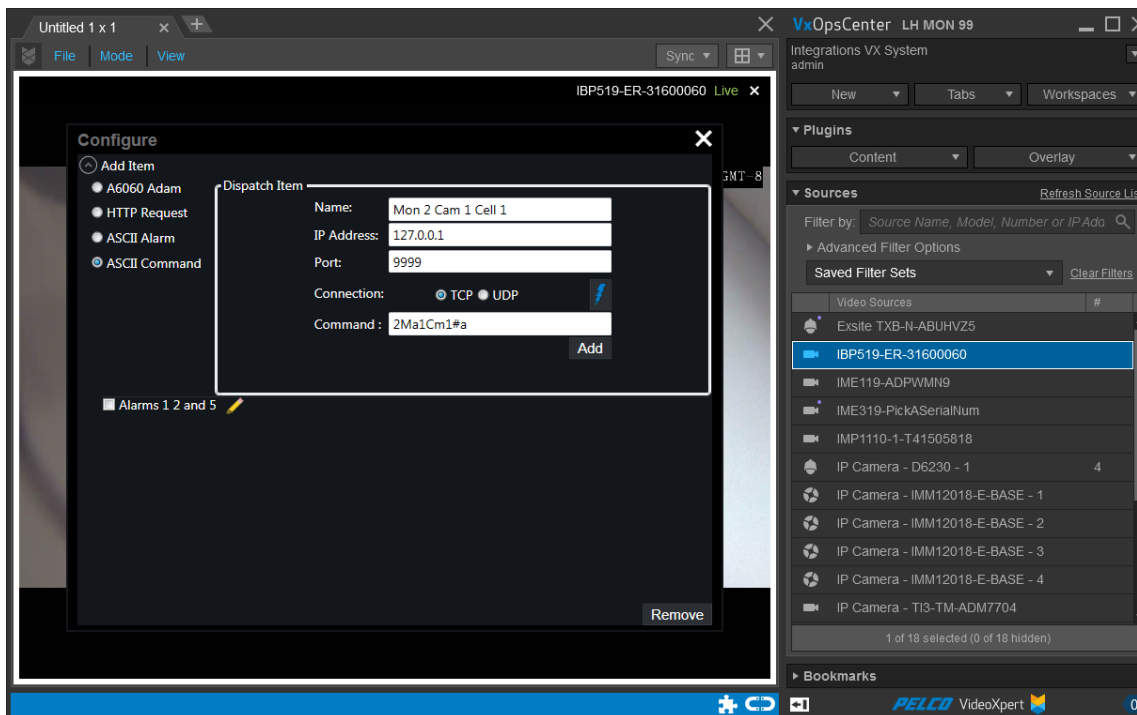
On this screen the user will be able to enter the details about the external I/O device. Select the Adam 6060 selection radio button, enter a descriptive name for the device, IP address and names for each of the relays. When complete click on the “Add” button. Clicking the “X” at the top of the plugin will exit configuration mode.



ASCII Alarms may be triggered using the “ASCII Alarm” dispatch item. Configuration may include any number of ASCII alarms which should be listed in the “Alarms” as a comma delimited string of alarm numbers that you wish to trigger. In order to configure alarms 1,2, and 5 enter the string “1,2,5” under “Alarms”.

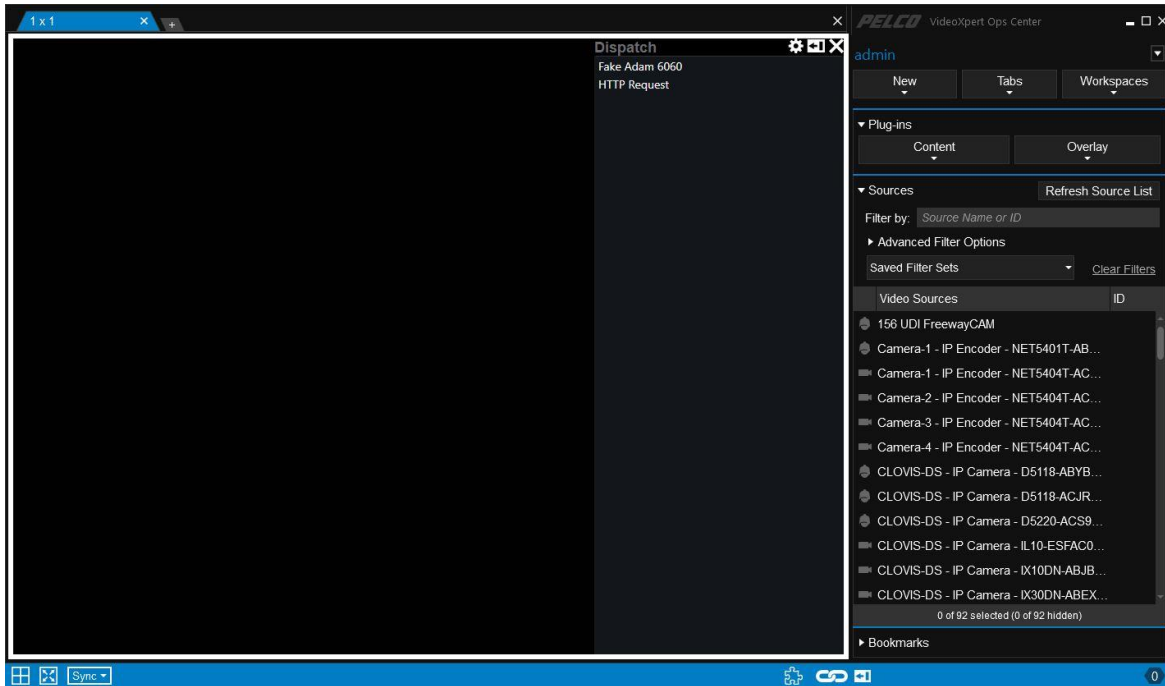


Any ASCII command may be sent using the “ASCII Command” dispatch item. The “Command” may include any string that you wish to send. “2Ma1Cm1#a” would send the ASCII Command for “On Monitor 2, Cell 1 display camera 1”. Remember that order is important with ASCII Commands as they are processed from left to right.

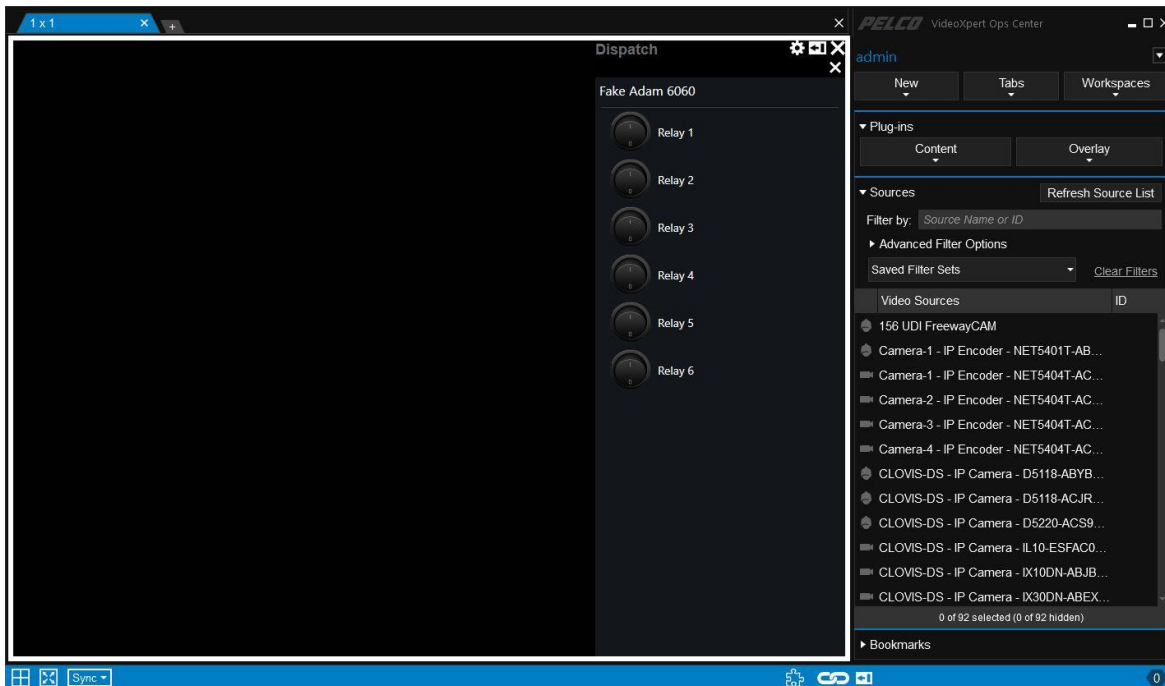


VideoXpert Dispatch Plugin Operation

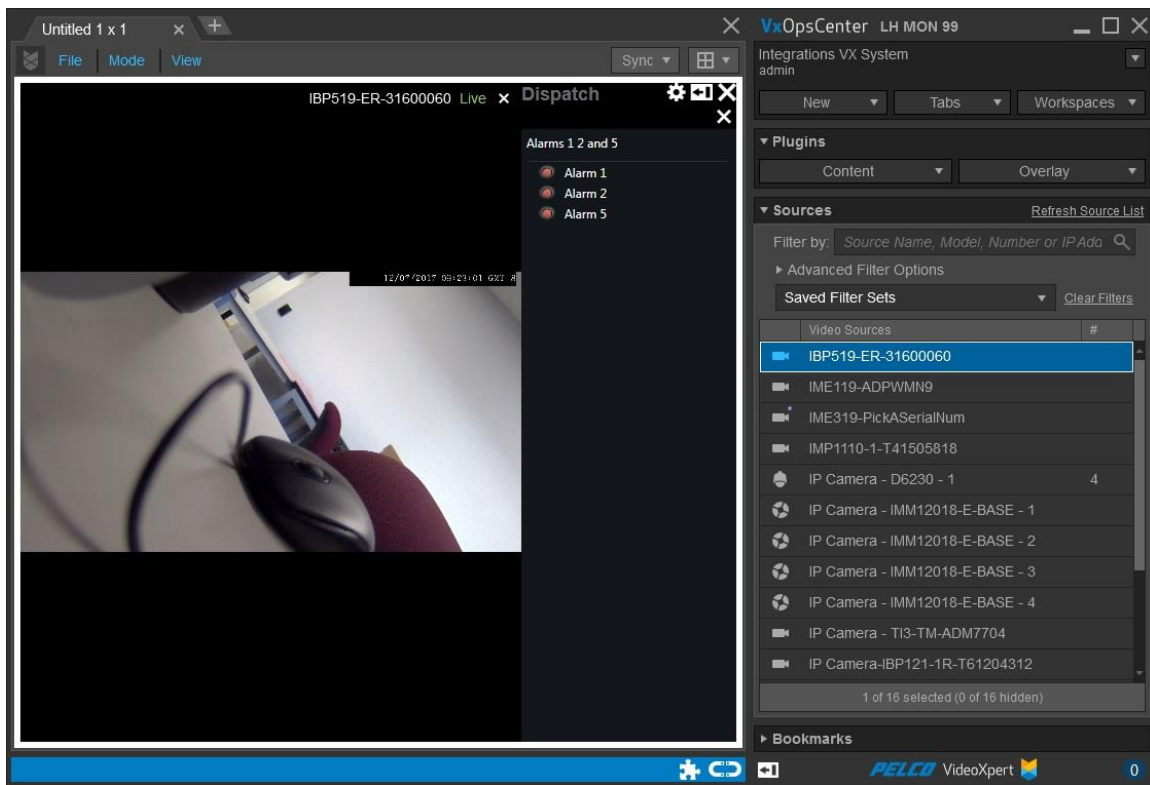
Once the configuration of the Dispatch Plugin is complete a user will be able to interact with the external I/O device. To control a device you must first select the device by double clicking on the device name.



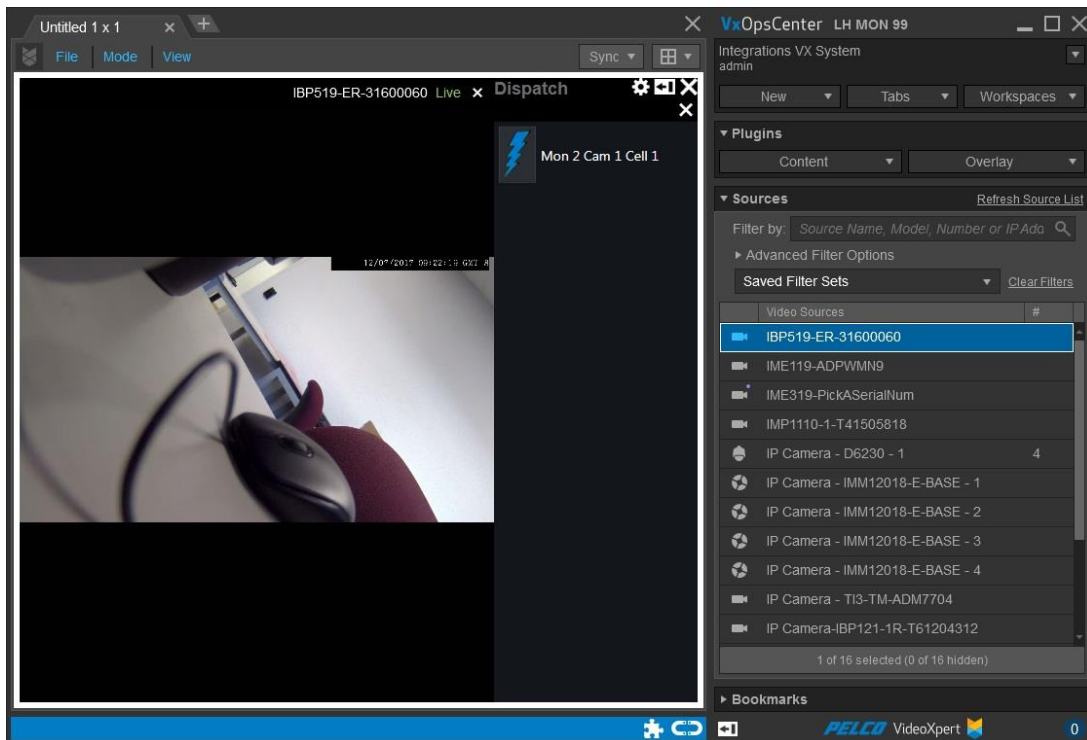
Once a device has been selected the list of relays will appear with toggle buttons. Users can then use these buttons to control the relays on the external device. Click on the “X” about the device name to exit this current device.



ASCII Alarms appear as a list of alarms. Pressing the “Alarm 1” button is equivalent to sending the ASCII command “1Ea”.



ASCII commands and HTTP Request items appear with a button that when pressed sends the associated command.



Supported Alarm Devices

Moxa ioLogik E1212

The VideoXpert Dispatch Plugin can set relays on the Moxa ioLogik E1212 through its Modbus Ethernet interface. Setup of the Moxa ioLogik E1212 must include enabling the Modbus interface by checking the checkbox “Enable Modbus/TCP Slave Protocol” on the User-defined Modbus Addressing Digital inputs/Outputs screen of the Moxa web interface. Address values should be left default.

Adam 6060

The VideoXpert Dispatch Plugin can set relays on the Adam 6060 device. Please refer to the Adam device manual for more information.

Supported ASCII Devices

Any ASCII device that is capable of receiving commands through either TCP or UDP can be supported. Note that no security or login is supported through the ASCII interface. Only the sending of simple strings over Ethernet is supported.

Frequently Asked Questions

- **Where should I install the Dispatch Plugin?**

The Dispatch Plugin will need to be installed on PC's running VideoXpert Ops Center. Please refer to the installation section of this document for more information.

- **If I configure one plugin will the configuration apply to all Dispatch Plugin installations?**

The Dispatch Plugin maintains all its configuration information locally per Ops Center PC. Each Ops Center PC will need to be configured individually.

- **Can I trigger a relay on devices other than the relays on the External I/O device?**

It is not possible to trigger relays on other devices within the VideoXpert system other than those on the external I/O device.

Pelco Troubleshooting Contact Information

If the instructions provided fail to solve your problem, contact Pelco Product Support at 1-800-289-9100 (USA and Canada) or +1-559-292-1981 (international) for assistance.

REVISION HISTORY

Manual Title	Date	Comments
Dispatch Plugin	04/17	Original version.

Pelco, the Pelco logo, and other trademarks associated with Pelco products referred to in this publication are trademarks of Pelco, Inc. or its affiliates. ONVIF and the ONVIF logo are trademarks of ONVIF Inc. All other product names and services are the property of their respective companies. Product specifications and availability are subject to change without notice.

© Copyright 2017, Pelco, Inc.
All rights reserved.



Pelco by Schneider Electric 3500 Pelco Way Clovis, California 93612-5699 United States
USA & Canada Tel (800) 289-9100 Fax (800) 289-9150
International Tel +1 (559) 292-1981 Fax +1 (559) 348-1120
www.pelco.com www.pelco.com/community