



VideoXpert 3.7 – Gallagher Command Centre Integration - Installation and Operation Guide

Contents

Introduction	3
Version Information	3
Integration Component Version	3
[3 rd Party Software] Version	3
System Overview	4
Features	4
Installation	5
Prerequisites	5
Installation Steps	5
GStreamer	5
Operation	6
Gallagher Command Centre Setup	6
Step 1	6
Step 2	6
Step 3	6
Step 4	6
Step 5 (Repeat steps 5 - 7 for each camera)	7
Step 6	7
Step 7	9
Troubleshooting	11
VxSdk Log File	11
Pelco Troubleshooting Contact Information	12

Introduction

This document is the installation and operation guide for VideoXpert Integration with the Gallagher Command Centre.

Version Information

Integration Component Version

#	Component Name	Version	Description
1.	RegisterVxIntegration.exe	VideoXpert 3.7.x.x	Installs VideoXpert integration plugin to Gallagher Command Centre.
2.	VxSdk.NET-Media	v3.0.31	VideoXpert SDK

[3rd Party Software] Version

#	Component Name	Version	Description
1.	Gallagher Command Centre	8.00	Gallagher Command Centre
2.	Gallagher CCVMS SDK	7.60.16.0	Gallagher's SDK for VMS integrations

System Overview

This integration is designed to be installed on the Gallagher Command Centre. The Command Centre loads external system libraries through the registry. See the “User Guide Command Centre Configuration Client – v800(Vol1).pdf” manual for information on setting up an External System.

Features

- Adds Live and Playback video to Gallagher Command Centre from VideoXpert
- PTZ of VideoXpert cameras from Gallagher Command Centre*.
- Callup of PTZ presets and patterns.
- Provides Snapshot of live or recorded video.
- Provides means to view, delete, download and create Exports.

* PTZ capabilities do not include client-side de-warping technologies such as those required by Optera.

Installation

Prerequisites

- Microsoft .NET 4.6.1 or later
- Visual C++ Redistributables (X86) for 2015

Installation Steps

1. Make sure all prerequisites are installed.
2. Copying installation files to a directory on the Gallagher Command Centre server where the files may remain permanently.
3. Run RegisterVxIntegration.exe from an elevated command prompt. This will register the library so that the Gallagher Command Centre will find and load it.

GStreamer

GStreamer is required for playing video in the Command Centre. GStreamer binaries are located in the installation directory under \Bin\CCVMSVxSDKIntegration\bin\x86\Release\bin. A system variable is created during installation called "GSTREAMER_BIN" that indicates the installation directory of the GStreamer binaries.

Operation

Gallagher Command Centre Setup

NOTE: If you are bringing video into the Command Centre without events, follow the steps below for setup. If you are also bridging events between the system, follow the setup instructions provided with the CCVMSVxEventService.

Step 1

In order to bring video from VideoXpert into Command Centre, run the Gallagher Configuration Client and Add a new External DVR System by right clicking on the External Systems Window and selecting “New” and then “DVR System”.

Step 2

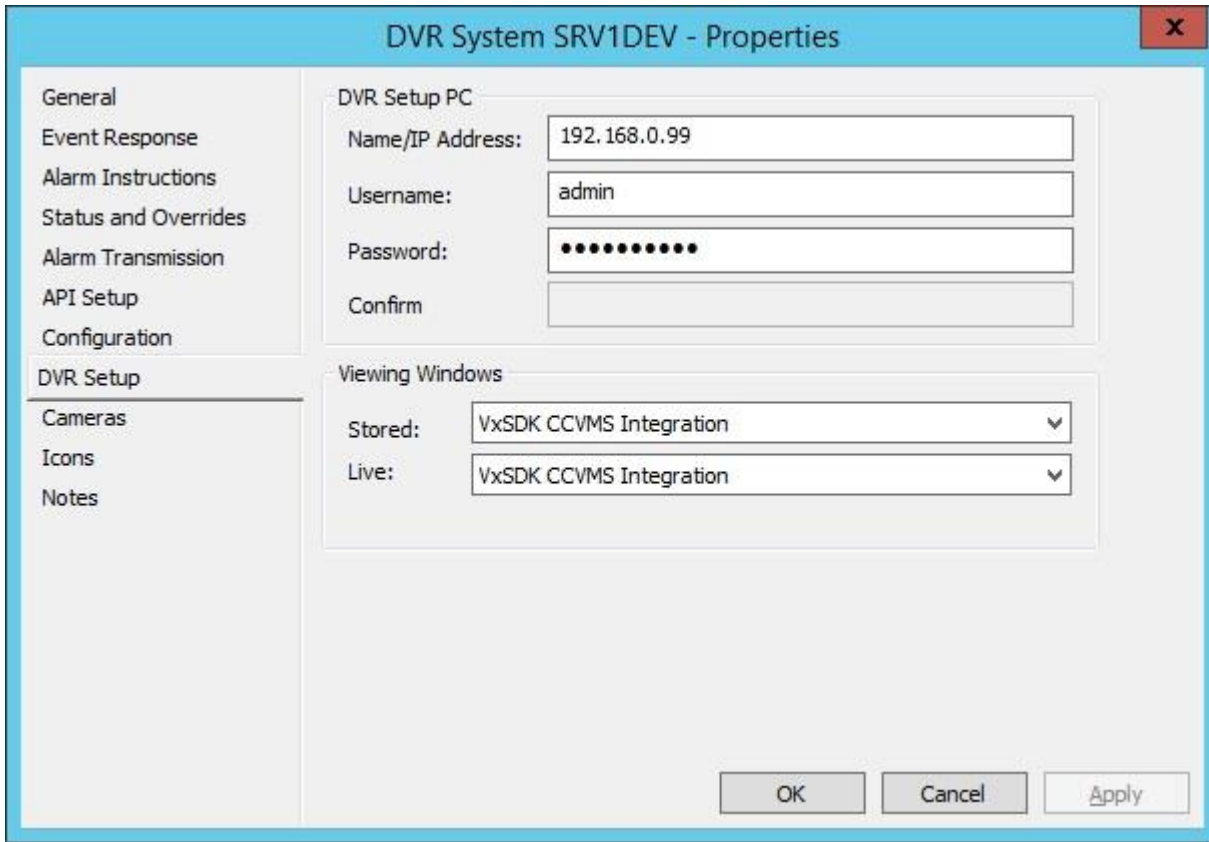
In DVR System Properties | General Settings, give the DVR System a Name and Description.

Step 3

In DVR System Properties | API Setup, assign a unique identity to the DVR System. This can be any unique string. It is suggested to use the VideoXpert system name you are targeting for the integration.

Step 4

In DVR System Properties | DVR Setup, assign the IP Address, Username and Password of the targeted VideoXpert system. Then select VxSDK CCVMS Integration from the dropdown boxes for Stored and Live Viewing Windows.

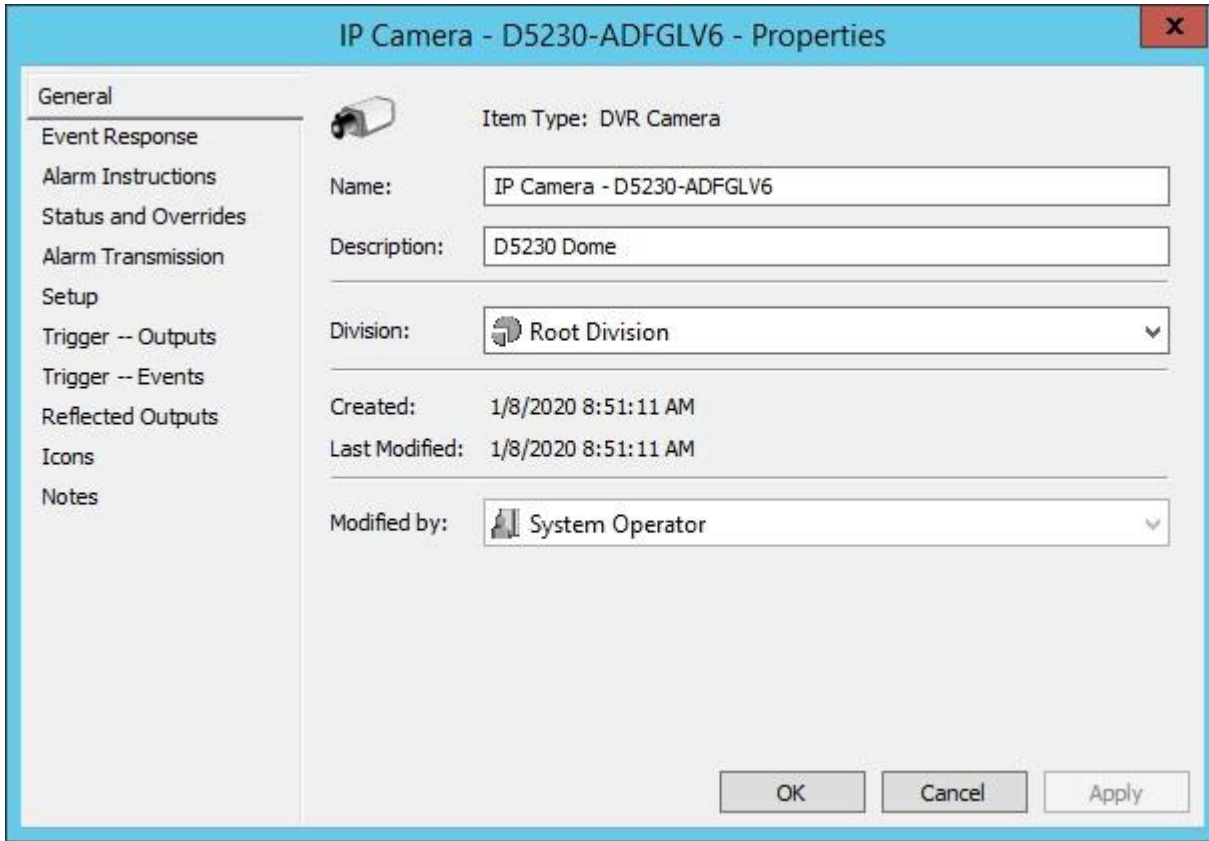


Step 5 (Repeat steps 5 - 7 for each camera)

Add a new Camera by right clicking on the External Systems Window and selecting "New" and then "Camera".

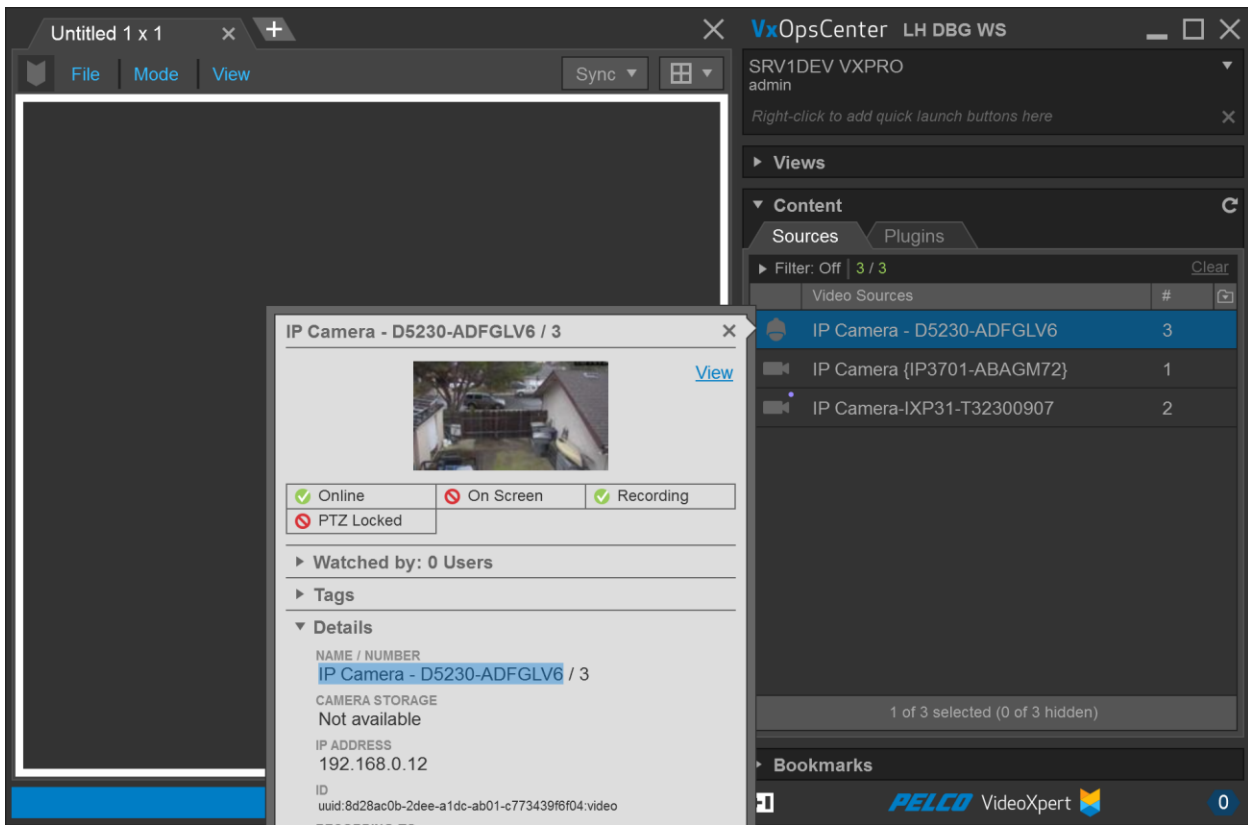
Step 6

Fill out the IP Camera Properties | General settings. The Name should be copied directly from the Camera name in VideoXpert. The Description is not important to the integration.



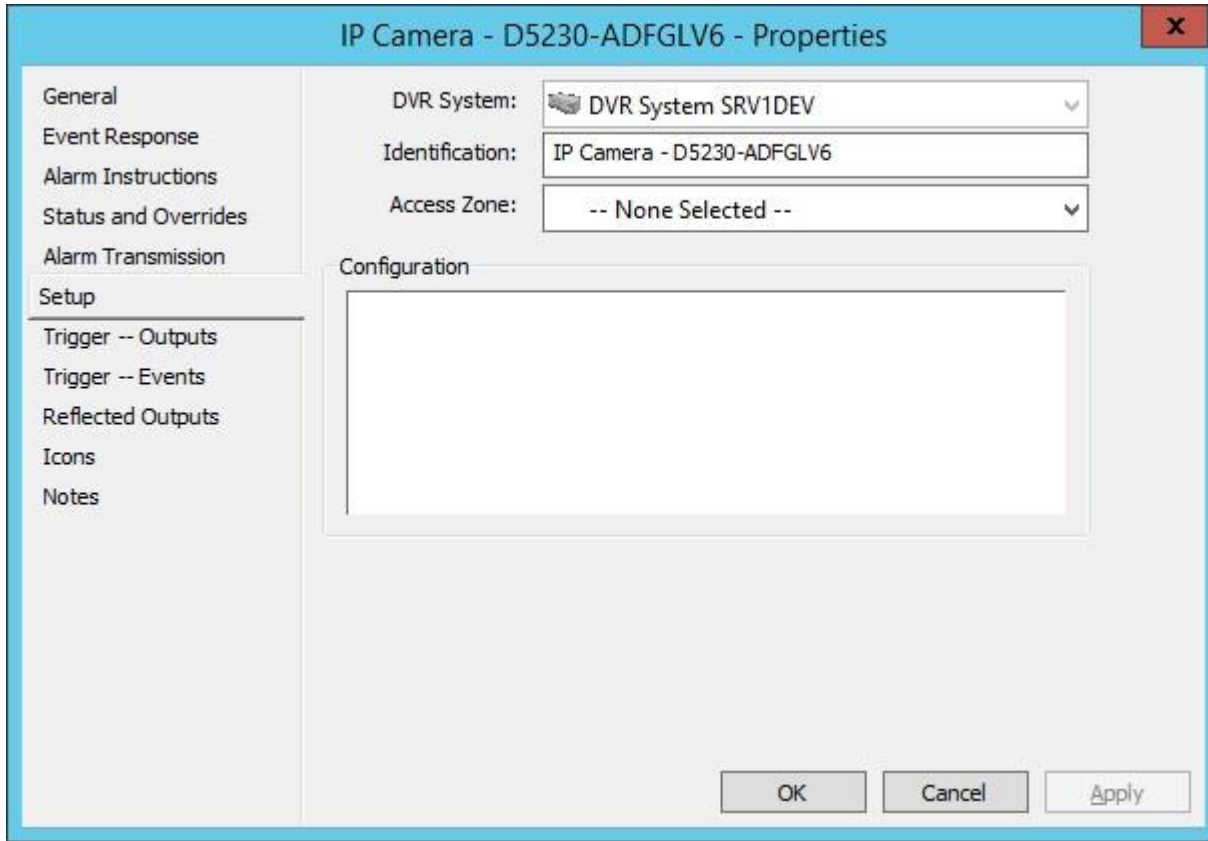
One way of copying the name of the camera in the VideoXpert system is from the VideoXpert Ops Center where you can hover over the camera icon in the camera list to show the camera details and then highlight the camera name and press Control-C to copy the text. Be careful not to copy the “/ Camera Number”.

VideoXpert Gallagher Command Centre Integration



Step 7

In the IP Camera Property | Setup select the DVR System. For the Identification, use the same Camera name used in Step 6.



After the DVR Settings and Camera Settings are completed, you should be able to add a Camera to a Monitor Site Viewer Panel in Gallagher Command Centre.

Troubleshooting

VxSdk Log File

This integration is built using the VideoXpert Sdk which outputs log files to C:\ProgramData\Pelco\VxSdk\Logs. These log files can be helpful in determining communication errors between the integration and VideoXpert.

Pelco Troubleshooting Contact Information

If the instructions provided fail to solve your problem, contact Pelco Product Support at 1-800-289-9100 (USA and Canada) or +1-559-292-1981 (international) for assistance.



Pelco, Inc.

625 W. Alluvial Ave.

Fresno, CA 93711

Tel. +1 559-292-1981

www.pelco.com

Pelco, the Pelco logo, and other trademarks associated with Pelco products referred to in this publication are trademarks of Pelco, Inc. or its affiliates. ONVIF and the ONVIF logo are trademarks of ONVIF Inc. All other product names and services are the property of their respective companies. Product specifications and availability are subject to change without notice. ©Copyright 2019, Pelco, Inc. All rights reserved.