



**VideoXpert Plates
v 1.0 Software
Installation Manual**

C6620M-A | 04/19

Contents

Preface	3
About this Manual	4
Introduction	5
Necessary Software Components	5
Installation	6
Unzip VideoXpert Plates Setup	6
Installation of VideoXpert Plates ALPR, VideoXpert Plates ALPR Setup, and VideoXpert Plates Manager	7
Run VideoXpert PlatesSetup	7
End User License Agreement (EULA)	8
Software Directory Creation	8
Software Installation	9
Single Server Applications	9
Multiple Server Applications	9
Database Installation	9
Software Installation	10
Installation of VideoXpert Plates Plug-In for VideoXpert OpsCenter	14
Run VideoXpert PlatesPlugin-Setup	14
Pelco Troubleshooting Contact Information	16

Preface

This manual is intended to guide administrators and users through the installation process of the VideoXpert Plates ALPR program, the VideoXpert Plates Manager, and the VideoXpert Plates plug-in for the Pelco VideoXpert OpsCenter software.

About this Manual

This manual is intended for both administrators of Pelco VideoXpert and VideoXpert Plates, and is applicable to version 3.0 or higher of VideoXpert and at least version 1.0 of VideoXpert Plates.

After installation, refer to the VideoXpert Plates ALPR Manual to setup the ALPR cameras. After the cameras are configured and working, refer to the VideoXpert Plates Manager Manual where the cameras are then connected to VideoXpert Plates Manager.

When the VideoXpert Plates Manager is receiving plates correctly, refer to the VideoXpert Plates ALPR plug-in Manual, which covers installation and use of the VideoXpert Plates plug-in for Pelco VideoXpert, as well as the interaction with the management of VideoXpert Plates Manager.

Introduction

The VideoXpert Plates product is a suite of programs that provides Automated License Plate Recognition (ALPR) capabilities to the Pelco VideoXpert video management system. The suite contains the following applications:

1. VideoXpert Plates ALPR: This software will connect to various video sources and perform ALPR analytics (OCR).
2. VideoXpert Plates Setup: This application is used to configure the VideoXpert Plates ALPR software.
3. VideoXpert Plates Manager: This software receives all information captured by the installed VideoXpert Plates ALPR systems, stores it, and provides a web interface to manage the information.
4. VideoXpert Plates Plugin for VideoXpert OpsCenter: This small plugin allows the users to perform the most common VideoXpert Plates Manager operations directly inside the VideoXpert OpsCenter software.

Note: Please read the full documentation on all components to be able to operate the system effectively.

Necessary Software Components

To perform a full installation, you will need the following software components:

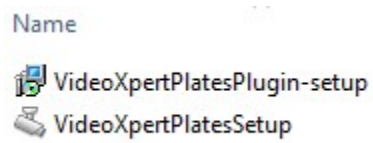
1. **VideoXpert PlatesSetup.exe**
This program installs VideoXpert Plates ALPR, VideoXpert Plates ALPR Setup and VideoXpert Plates Manager.
2. **VideoXpert PlatesPlugin-setup.exe**
This program installs the VideoXpert Plates plug-in for VideoXpert OpsCenter.

Installation

Unzip VideoXpert Plates Setup

Decompress (unzip) "VideoXpert PlatesSetup.zip" into a convenient folder on the target PC.

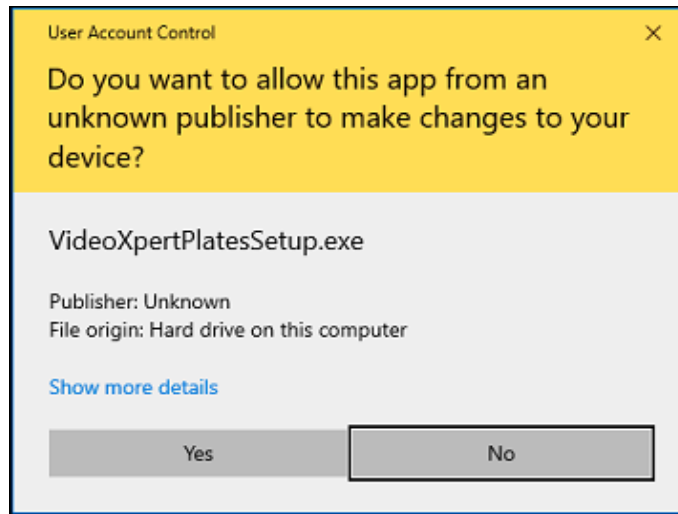
This will unzip the two installation files:



Installation of VideoXpert Plates ALPR, VideoXpert Plates ALPR Setup, and VideoXpert Plates Manager

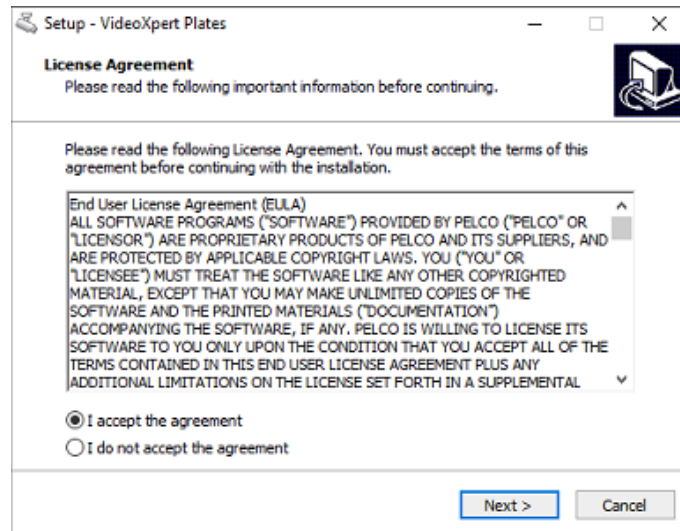
Run VideoXpert PlatesSetup

This starts the installation process. You will be asked several questions, and will be asked to accept the license agreement. The software is designed to work with Microsoft Windows 7 and higher, including Windows Server 20XX. For Windows 10, you will see the following screen. To proceed with the installation, click **Yes**.



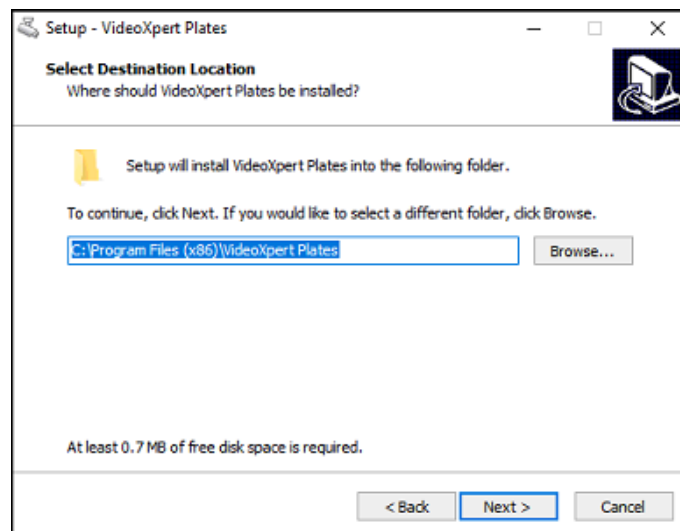
End User License Agreement (EULA)

The installer will require you to accept the EULA to install and use the VideoXpert Plates software. Please read the EULA carefully. If you agree, select the **I accept the agreement**, and then click the **Next >** button at the bottom of the screen. This will advance you to the next screen and allow installation of the software. If you do not accept the EULA, the installation process will exit.



Software Directory Creation

Next select or create the location where the software will reside. Use the recommended directory or select you own and press **Next >** at the bottom of the screen. The directory location will be created, and you will be prompted to select the software to install. If you choose a different directory, use this directory name in place of the default.



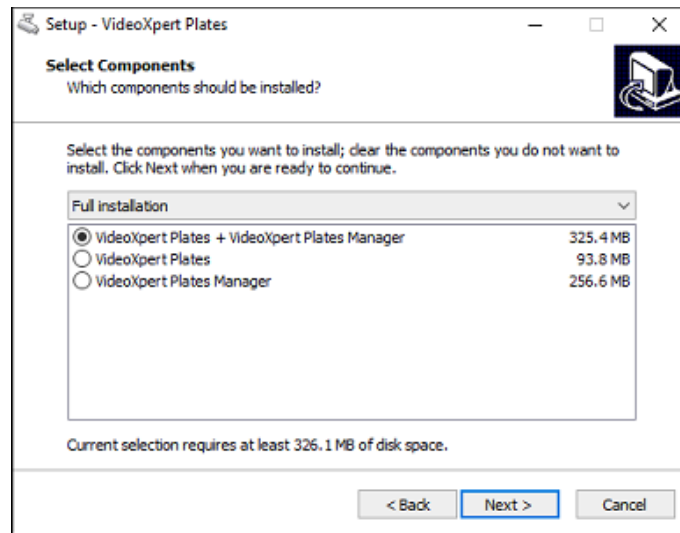
Software Installation

Single Server Applications

For single server applications, where VideoXpert Plates ALPR and the VideoXpert Plates manager are used on the same server, select the top installation radio button VideoXpert Plates + VideoXpert Plates Manager, and then click **Next >** to install the software.

Multiple Server Applications

For multiple server applications, VideoXpert Plates ALPR may be loaded on several servers. Only one instance of VideoXpert Plates Manager is needed, and this may be installed on one of the servers with the VideoXpert Plates ALPR or on its own server. Click **Next >** to install the software.

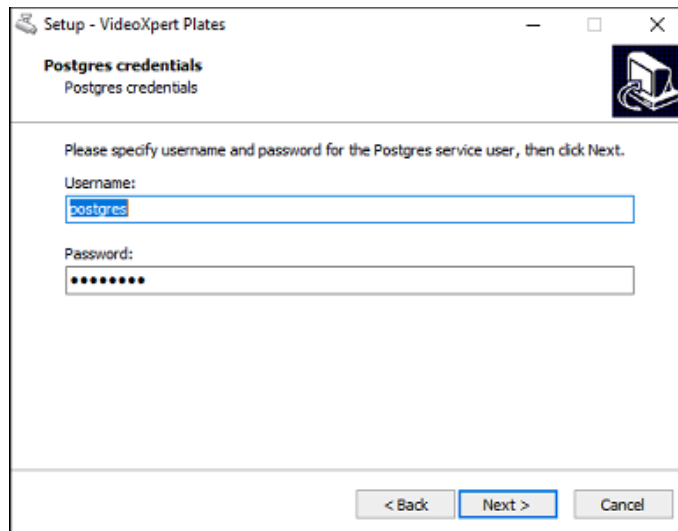
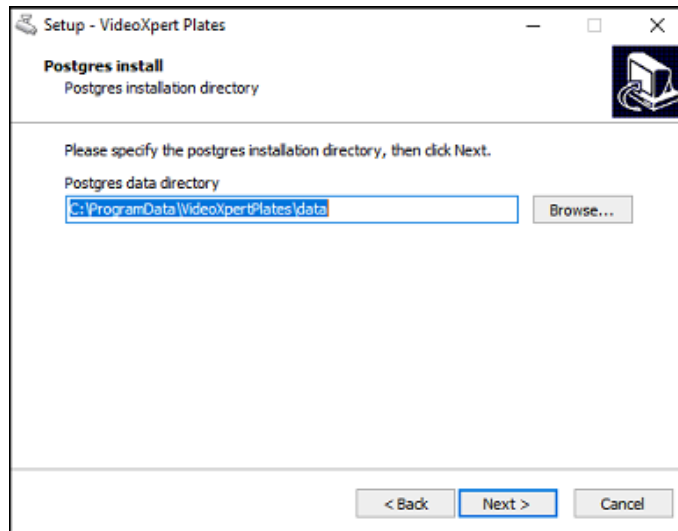


Database Installation

For VideoXpert Plates Manager to store data and pass results to the VideoXpert Plug-in, you must install PostgreSQL. (*PostgreSQL is a powerful, open source object-relational database system that uses the SQL language to store data*).

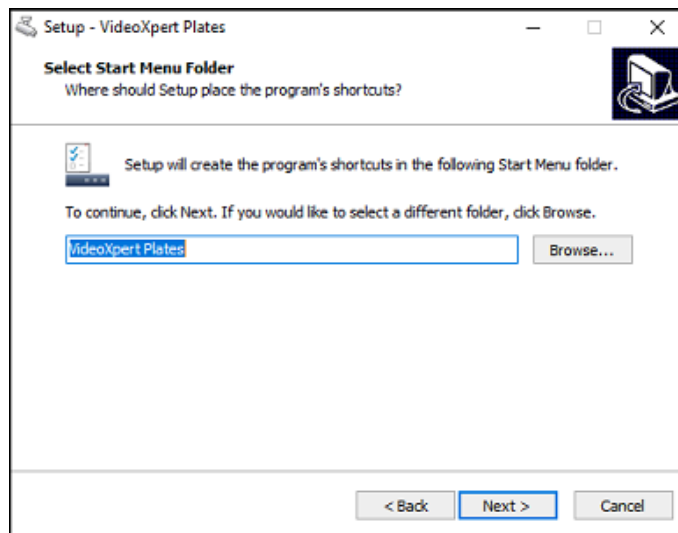
Next select or create the location where the database will reside. Use the recommended directory or select you own, and then click **Next >** at the bottom of the screen. The directory location will be created, and you will be prompted to select the software to install. Please note, not using the suggested locations will require knowledge of how to redirect where the programs look for and passes data.

Next the Postgres Credential will be displayed. If the user name and password are not pre-populated and you need to enter this manually, the user name and password are postgres. Click **Next >** at the bottom of the screen.

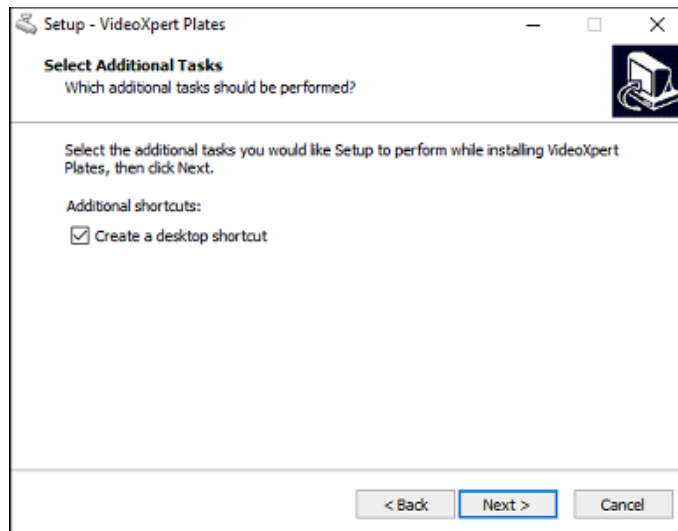


Software Installation

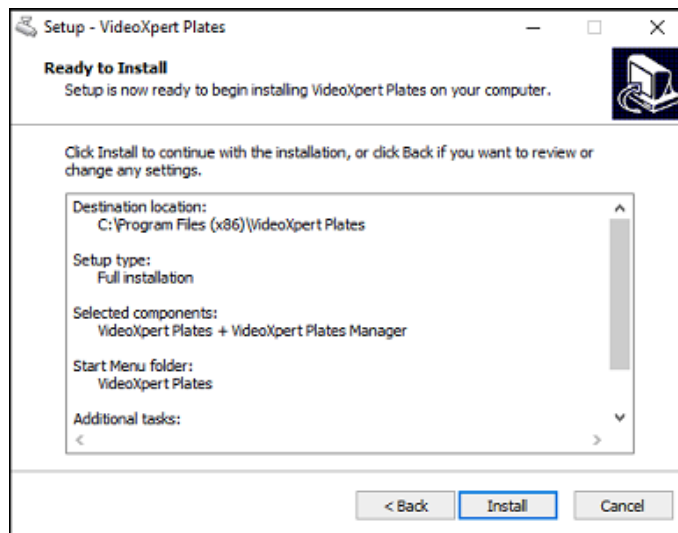
Next select or create the location where VideoXpert Plates software will reside. In the case of a single server, this is the location for both VideoXpert Plates (ALPR) and VideoXpert Plates Manager. The steps are the same for loading VideoXpert Plates (ALPR) on individual servers and VideoXpert Plates Manager on a single server. Use the recommended directory or select you own and click **Next >** at the bottom of the screen. The directory location will be created, and you will be prompted to select the software to install. Please note, not using the suggested locations will require knowledge of how to redirect where the programs look for VideoXpert Plates.



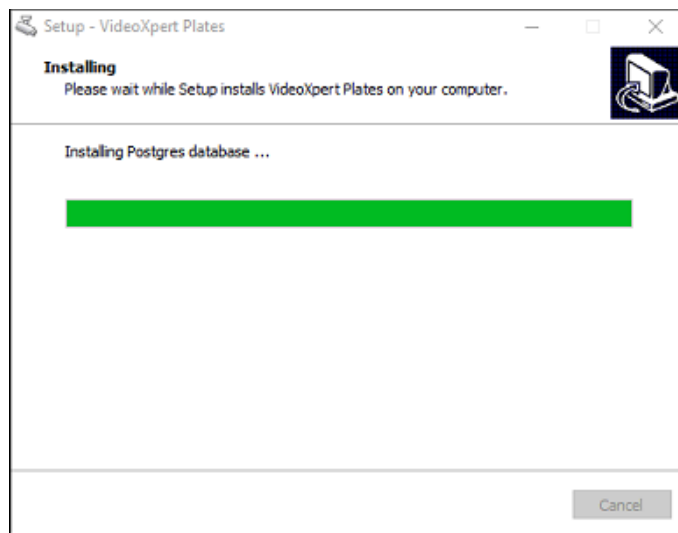
The software will create a desktop shortcut, if desired. To add the desktop shortcut, verify that the **Create a desktop shortcut** box is checked; if it is not, select and check the **Create a desktop shortcut** box. Click **Next >** at the bottom of the screen. If a desktop shortcut is not wanted, uncheck **Create a desktop shortcut** and click **Cancel**.



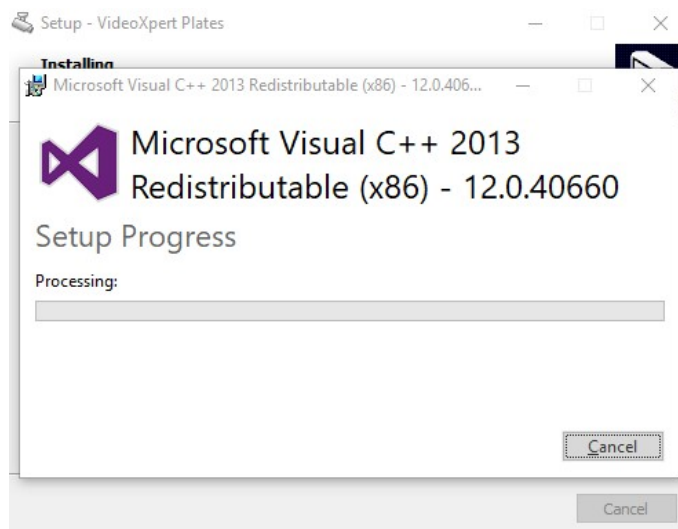
The software is ready for installation. To proceed click **Install >** at the bottom of the screen. To go back to a previous step, click **<Back**. To abort the installation process, click **Cancel**.



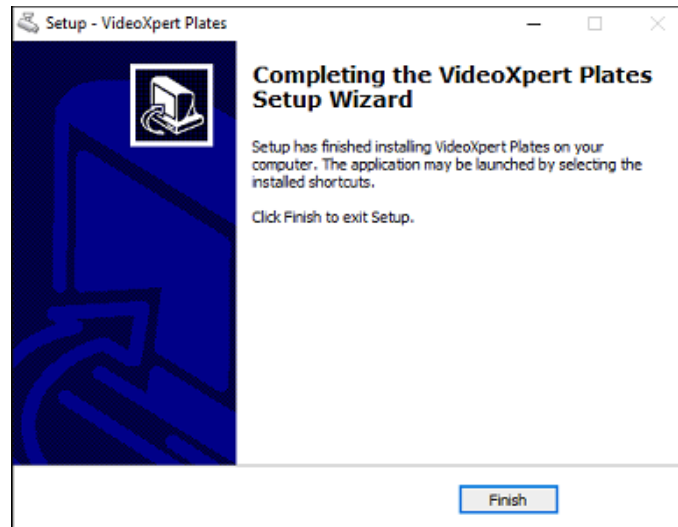
The progress of the installation is shown on the Installing status screen.



Once the software is installed the Microsoft Visual C++ installation is automatically initiated.



After the software has completed the installation process, click **Finish**

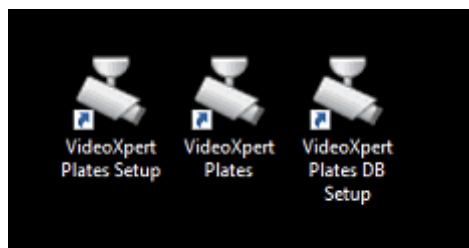


This will have installed all three programs, as specified.

VideoXpert Plates Setup and VideoXpert Plates are opened by the icons which are now installed on your desktop.

VideoXpert Plates Manager runs as a service and is accessed by using a web address. In this version it is located at: localhost:8080/vxplates

The third icon installed is a shortcut to the Database Setup program which links the cameras in VideoXpert Plates Manager to VxOpsCenter.



Run this program after setting up VideoXpert and the Plug-in.

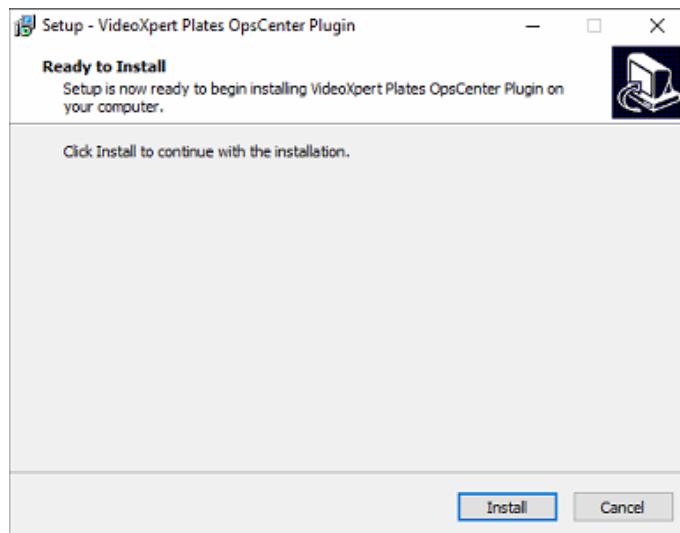
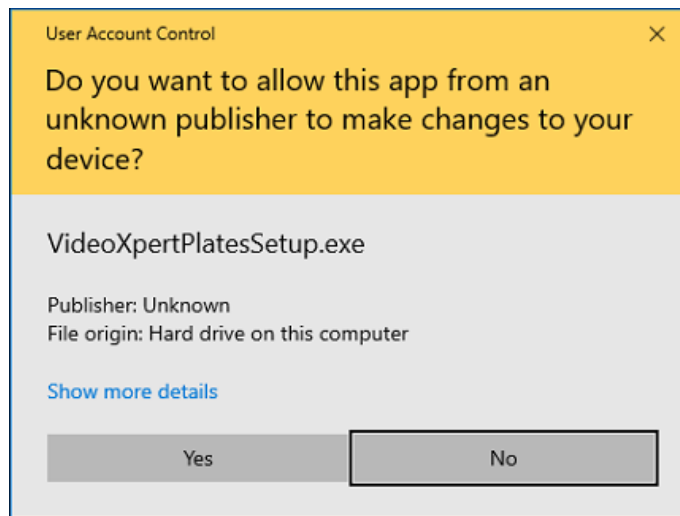
Installation of VideoXpert Plates Plug-In for VideoXpert OpsCenter

This component is a Plug-in designed to be executed within VideoXpert OpsCenter 3.0 or above. It provides a user interface within VideoXpert OpsCenter to interact with VideoXpert Plates Manager. This is only needed if connecting VideoXpert Plates to a VideoXpert video management system.

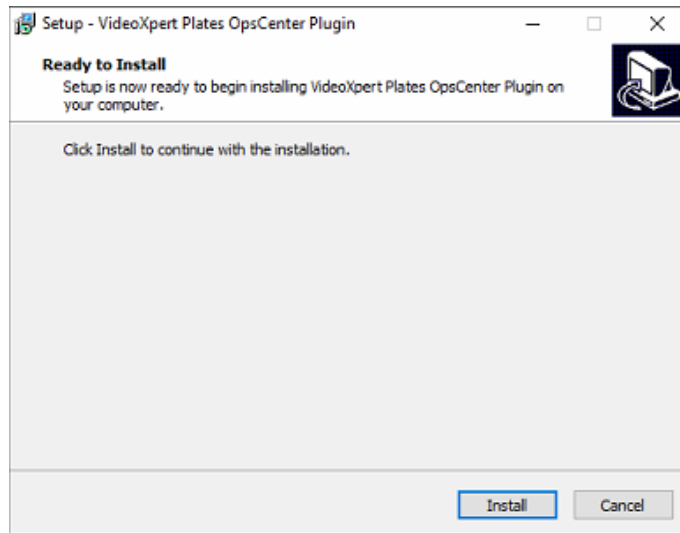
The VideoXpert Plates Plugin software is installed on the same server / workstation where the VideoXpert OpsCenter is loaded. Before installing this plug-in, please stop the execution of VideoXpert OpsCenter (if running).

Run VideoXpert PlatesPlugin-Setup

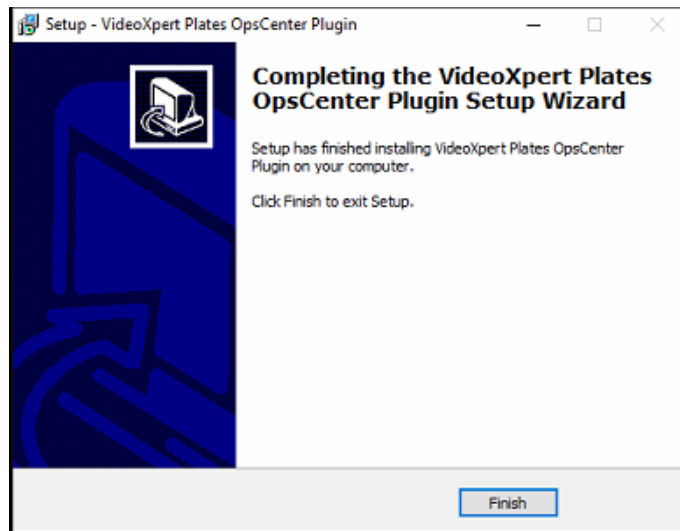
This starts the installation process. The software is designed to work with Microsoft Windows 7 and higher, including Windows Server 20XX. For Windows 10, you will see the following screen. To proceed with the installation, click **Yes**.



To proceed, click **Install** at the bottom of the screen. To abort the installation, click Cancel.



After the software has completed the installation process, click **Finish**.



That completes the installation of all the software.

Refer to the VideoXpert Plates ALPR User Manual, the VideoXpert Manager User Manual, and the plugin section of the VideoXpert OpsCenter Operations Manual for setup instructions.

Pelco Troubleshooting Contact Information

If the instructions provided fail to solve your problem, contact Pelco Product Support at 1-800-289-9100 (USA and Canada) or +1-559-292-1981 (international) for assistance. Be sure to have the serial number available when calling.

Do not try to repair the unit yourself. Leave maintenance and repairs to qualified technical personnel only.



Pelco
625 W. Alluvial, Fresno, California 93711 United States
(800) 289-9100 Tel
(800) 289-9150 Fax
+1 (559) 292-1981 International Tel
+1 (559) 348-1120 International Fax
www.pelco.com

Pelco, the Pelco logo, and other trademarks associated with Pelco products referred to in this publication are trademarks of Pelco, Inc. or its affiliates. ONVIF and the ONVIF logo are trademarks of ONVIF Inc. All other product names and services are the property of their respective companies. Product specifications and availability are subject to change without notice.
© Copyright 2019, All rights reserved.